



World MTBO Championships 2018

**Junior World MTBO Championships
Youth European MTBO Championships**

August 5 – 13, 2018 | Waldviertel, Austria

Bulletin 2

Content

1. Organisers
2. Event advisor
3. Event centre
4. General Information
5. Location
6. Program
7. Classes and participation restrictions
8. Entries
9. Entry fees
10. Account details for payment
11. Transport
12. Accommodation
13. Time keeping system
14. Maps
15. Embargoed areas
16. Terrain description
17. Rules
18. Anti - doping
19. Weather
20. Health care
21. Visas
22. Training opportunities
23. Media services
24. Live coverage



1. Organisers

International Orienteering Federation

www.orienteing.org



Austrian Orienteering Federation

www.oefol.at

Prinz Eugen Str. 12,
1030 Wien – Austria
office@oefol.at
+43 (0)1 5050393



WMTBOC - organizing committee

www.wmtboc2018.at

office.wmtboc2018@gmail.com



Organising Committee

Event director: Paul Grün
Event director - deputy: Ewald Mayer
Event centre administration: Karin Irk

2. Event Advisers

IOF Advisor: Simon Seger
National Advisor: Wolf Eberle

3.Event Centre

Vocational school “Landwirtschaftliche Fachschule (LFS) Edelhof”

www.lfs-edelhof.ac.at

Edelhof 1,
3910 Zwettl – Austria
GPS: 48°36,396´N, 15°13,349´E
+43(0)660 3184440
Event telephone open from 1. 6.



Event Centre: 3km outside Zwettl
Distance from int. airports: Vienna 150km, Praha 230km

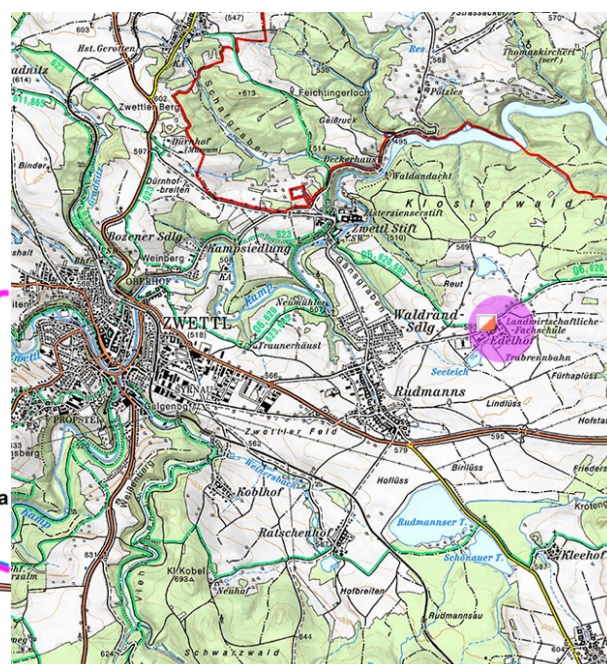
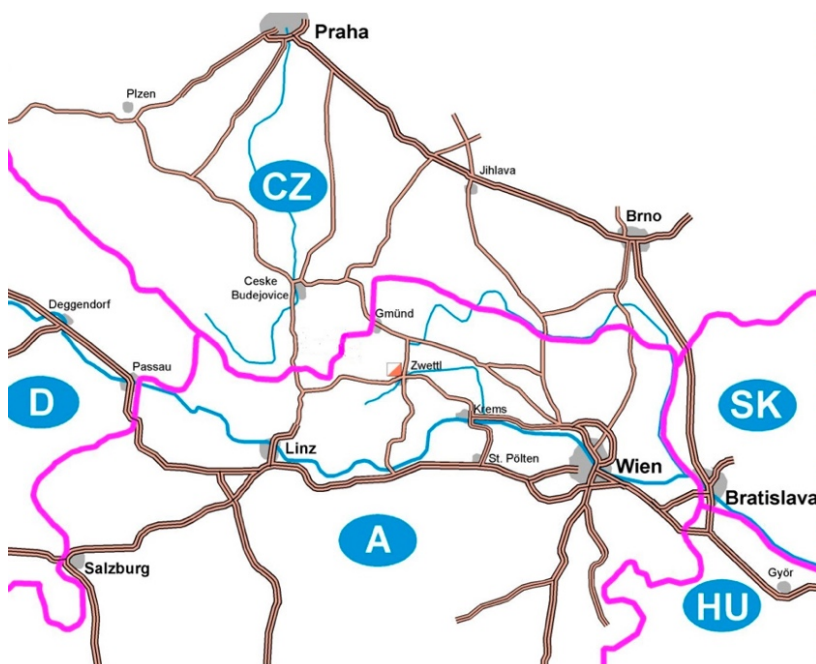
4.General Information

Austrian orienteering federation welcomes all participants of the World Mountain Bike Orienteering Championship 2018 in Zwettl.

Zwettl (11.000 inhabitants, 520 m above sea level) is the Waldviertel district capital of the Austrian state of Lower Austria. It is chiefly known as the location of Zwettl Abbey, first mentioned in October 1139.

The Waldviertel (Forest Quarter) is the northwestern region of the Austrian state of Lower Austria. It is bounded to the south by the Danube, to the southwest by Upper Austria, to the northwest and the north by the Czech Republic and to the east by the Manhartsberg (537 m). Waldviertel is covered 49 % with forest.

5.Location



6. Program

	WMTBOC + JWMTBOC	EYMTBOC
Sunday, 5 th August	Arrival & Training	Arrival & Training
Monday, 6 th August	Arrival & Model Event	Arrival & Model Event
Tuesday, 7 th August	IOF – WOC Mass start	Training
Wednesday, 8 th August	IOF – WOC Middle	IOF – EOC Middle
Thursday, 9 th August	IOF – WOC Relay	IOF – EOC Relay
Friday, 10 th August	Restday	Restday
Saturday, 11 th August	IOF – WOC Long	IOF – EOC Long
Sunday, 12 th August	IOF – WOC Sprint, Banquet	IOF – EOC Sprint, Banquet
Monday, 13 th August	Departure	Departure

7. Classes and participation restrictions

Classes

WMTBOC:WE, ME

JWMTBOC:W20, M20

EYMTBOC:W17, M17

Participations

WMTBOC

There is one class for women and one for men. There are no age restrictions.

Each Federation may enter a team of an unlimited number of competitors and up to 6 team officials.

In the Mass start, Middle distance and the Sprint every Federation may enter up to 6 women and 6 men and, in addition, the current World Champions for the distance may be entered by their Federations.

In the Relay, each Federation may enter two women's teams and two men's teams, each consisting of 3 team members.

For the Long distance competition, the number of competitors who may enter is limited. The qualification rules are published as Special Rules decided by IOF Council and published at the latest by January 31st 2018.

JWMTBOC

There is one class for women and one for men. Only competitors who are entitled to compete in the classes W20 or M20 (aged 20 or younger up to the end of the calendar year 2018) may participate.

Each Federation may enter a team of an unlimited number of competitors and up to 6 team officials.

In each competition every Federation may enter up to 6 women and 6 men.

In the Relay, each federation may enter up to 2 women's teams and 2 men's teams, each consisting of 3 team members. Incomplete teams and teams with cyclists from more than one federation are not allowed.

EYMTBOC

There is one class for women (W-17) and one for men (M-17 for athletes who are no more than 17 years old on 31st December 2018).

For each individual competition a Federation may enter a maximum of 6 competitors in each class. The organizing Federation (Austria) may have two additional competitors as official EYMTBOC competitors in the individual competitions.

In the Relay, each Federation may enter two women's team and two men's team, each consisting of 3 team members. Incomplete teams and teams with cyclists from more than one federation are not allowed.

Public races: Open competitions will be offered. More information follows in Bulletin 3.

8.Entries

All entries have to be done via IOF eventor: <http://www.eventor.com/>

Entry deadlines

Team size entry by June 5th 2018

- Federation
- Total number of competitors of each gender
- Number of competitors in each competition
- Number of relay teams
- Number of team officials
- Name of team manager, e-mail address and mobile phone number
- Detailed Request for transportation
- Number of rental SIAC

Late entries and changes shall be accepted if possible. After the team size entry, additional entries may be made with a surcharge of 20% and withdrawals receive an 80% refund.

Team names entry by July 27th 2018

- Each competitor's family name and first name, gender, year of birth and the competition in which they will compete and SIAC number
- Names of the team officials

Late entries and changes are accepted if possible. After the team names deadline additional entries incur a surcharge of 50%, withdrawals receive a 50% refund, and name changes incur a 10 € fee.

Full payment for entry fees by 11th June 2018.

9.Entry fees

WMTBOC

Accreditation fees (all participants: competitors and team officials)	€ 60,-/person
Model event	€ 10,-/person
Long distance	€ 60,-/person
Mass start	€ 60,-/person
Middle distance	€ 60,-/person
Sprint distance	€ 60,-/person
Relay	€ 180,-/team

JWMTBOC

Accreditation fees (all participants: competitors and team officials)	€ 40,-/person
Model event	€ 10,-/person
Long distance	€ 40,-/person
Mass start	€ 40,-/person
Middle distance	€ 40,-/person
Sprint distance	€ 40,-/person
Relay	€ 120,-/team

EYMTBOC

Accreditation fees (all participants: competitors and team officials)	€ 30,-/person
Model event	€ 10,-/person
Long distance	€ 30,-/person
Mass start	€ 30,-/person
Middle distance	€ 30,-/person
Sprint distance	€ 30,-/person
Relay	€ 90,-/team

10.Account details for payment

All payments are to be made to „OLZ UNION Waldviertel“ by bank transfer as follows
(all charges have to be paid by sender)!

IBAN: AT16 2027 2000 0068 9323

SWIFT/BIC: SPZWAT21XXX

Bank: Waldviertler Sparkasse

Account name: Orientierungslaufzentrum UNION Waldviertel – WM

Adress: 3912, Grafenschlag 106

Entries to the WMTBOC, JWMTBOC, EYMTBOC, official accommodation and transport will be accepted and confirmed after the receipt of the transfer.

11.Transport

Local transportation to and from the event center will be offered for a fee for teams in need for such a service when ordering in advance (preliminarily request not later than April 29th 2018, detailed request team size entry)

Transportation to and from Zwettl to Vienne International Airport can be ordered from the organizers for a fee (preliminarily request not later than April 29th 2018, detailed request with team size entry).

1 – 3 persons one way € 270,-

4 – 8 persons one way € 380,-

All prices as of 2017, Prices 2018
will be published if available.

Contact

office.wmtboc2018@gmail.com

Please inform the organizers in due time of any assistance you require with transportation.

12.Accommodation

Three different categories of accommodation in the vocational school Edelhof are offered by the organizers to ensure that all participants can find a place that suits their need and budget.

All prices as of 2017 with half board per person and night, Prices 2018 will be published if available:

Single person in Double room	€ 60,--
Double room	€ 48,-- (50 rooms)
3 bed room	€ 46,-- (25 rooms)
4 bed room	€ 44,-- (25 rooms)
Four-bed room (shower and toilets on the floor)	€ 40,-- (6 rooms)
Six-bed room (shower and toilets on the floor)	€ 37,-- (4 rooms)
Hard floor (Gym)	€ 25,--
Tent place (400m from EC, with half board in EC)	€ 20,--



The official accommodation can be booked with the official form published on the homepage in spring 2018.

Full payment for entry fees by 11th June 2018.

13.Time keeping system

SPORTident will be used on all events.

The use of BSF 7 or BSF 11 is under consideration.

14.Maps

New and updated MTB Orienteering maps

Scales: 1:7 500, 1:10 000, 1:15 000

Contour intervals: 5m

Terrain Type: hilly, various kinds of roads and paths.

All events will be organized in accordance with the IOF International Specification for MTB Orienteering Maps (2010).

Map details

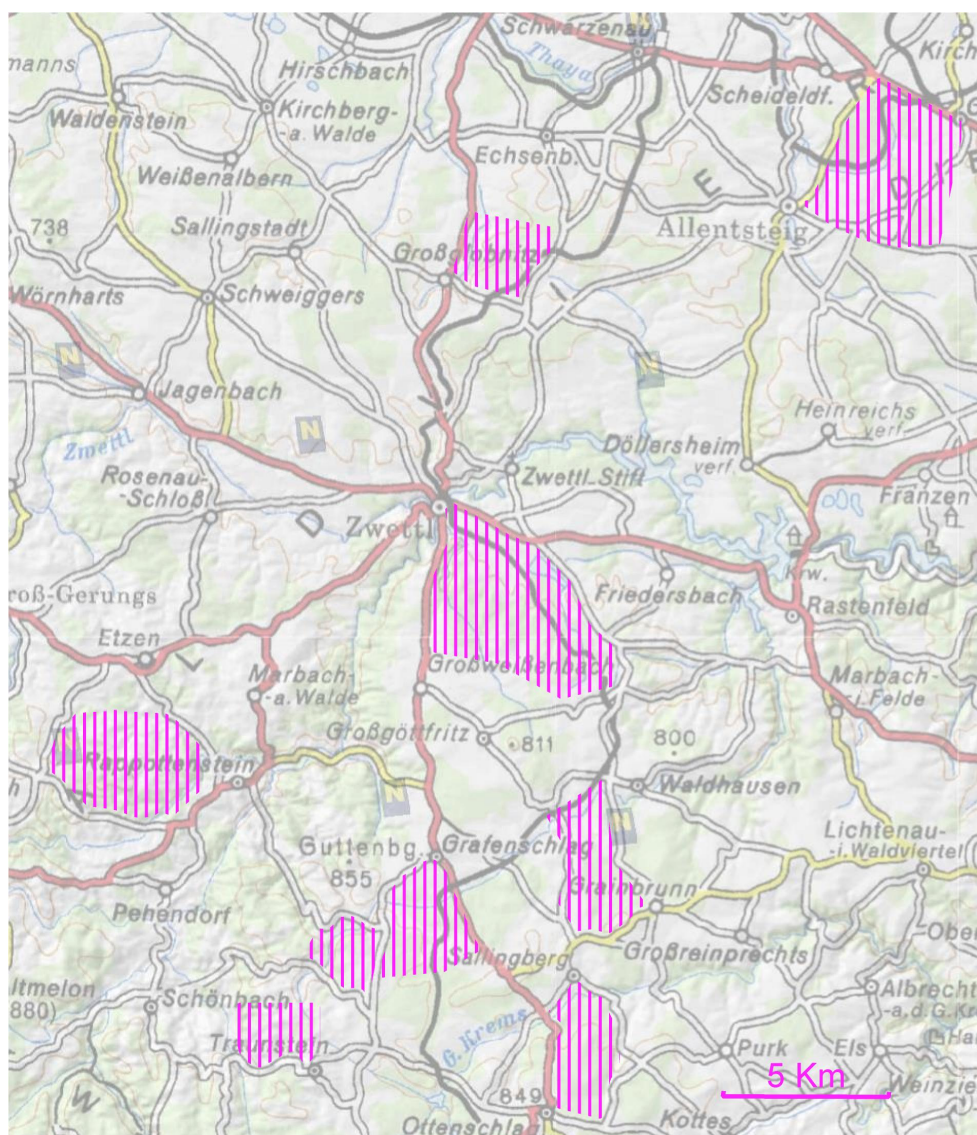
Long distance	1:15 000 / contour 5m
Mass start	1:10 000 / contour 5m
Middle distance	1:10 000 / contour 5m
Relay	1:10 000 / contour 5m
Sprint distance	1:7 500 / contour 5m

The old maps of these areas are published on the event website:

- Schwarzwald (1978)
- Schweinsberg (1978)
- Lembach (2005)

15. Embargoed Areas

The areas are out of bounds for all potential participants and team members, including competitors, team leaders, coaches, doctors, escorts, and any other person who through their knowledge of the terrain may influence the result of the competitions. Permission for access into embargoed terrain has to be requested from the organizer if needed.



16.Terrain description

Alternately forest and open area, dense tracks network, mostly good rideability. Some tricky steep sections.

Long distance

very hilly area with tracks network

Mass start, Middle distance and Relay

hilly area with dense tracks network

Sprint distance

flat area with forest and urban part

All competition areas are open to public traffic. The courses cross several public roads. Critical crossings there will be marshaled. Bikers have to follow the instruction of marshals. Still, it is the riders' responsibility to observe traffic rules and avoid unsafe practices.

17.Rules

All events will be organized in accordance with the Competition Rules for IOF MTB Orienteering Events, valid from 1 January 2017, Special Rules for MTB Orienteering World Cup 2018 and the IOF Anti-Doping Rules valid at the time of the event. All competition rules can be found on the IOF website.

Please consult: <http://orienteering.org/mtb-orienteering/rules/>

In this specific event:

- Riding, running or walking off the mapped track, trail or path is forbidden.
- In Austria you drive on the RIGHT side of road. Therefore you must ride on the RIGHT side on all roads and tracks. Overtaking slower riders should be done by the LEFT.

18.Anti-doping

Doping is forbidden. The IOF Anti-Doping Rules apply to all IOF events and the IOF Council may require doping control procedures to be conducted.

It is the responsibility of competitors to obtain any required TUE (therapeutic use exemption) certificate.

19. Weather

Waldviertel is between 500 – 900m above sea level. Average temperature in August is 19,7° C, in the night about 10° C. Rain is possible (average 9,6 days in August).

20. Health care

The organizers will provide first aid at the competition centre and at the arenas of each event.

The organizers will not be liable for any health insurance costs for participants. We recommend that all participants arrange their own personal health insurance. Participants take part at their own risk.

The nearest hospital:

Landeskrinikum Zwettl
Propstei 5
3910 ZWETTL
+43 (0)2822 9004 0

21. Visas

ENTRY PERMITS TO AUSTRIA

Austria is a full Schengen member state. You can find a list of countries which need a visa for Austria here: http://www.bmi.gv.at/cms/BMI_Fremdenpolizei/visumspflichten/start.aspx

Visas have to be applied for at your nearest Austria embassy. The Austrian Orienteering Federation - ÖFOL - will assist participants as required to obtain visas.

22. Training opportunities

We will offer two training maps with control points for 3rd to 4th August.

23. Media services

Media representatives are cordially invited to Zwettl. Registration for media representatives should be done via email not later than 11th June 2018

Contact:

Nathalie Huber
nh@oefol.at

24. Live coverage

GPS tracks of WMTBOC will be displayed in the finish area. All tracks will be published on the event website after the event.

