



MTBO Worldcup 2017

June 2 – 5, 2017 | Waldviertel, Austria
Bulletin 3



Content

1. Organisers
2. Event Advisor
3. Event Center
4. General Information
5. Location
6. Program Overview
7. Time table
8. Competition details
9. Classes and participation restrictions
10. Entries
11. Entry Fees
12. Account details for payment
13. Transport
14. Accommodation
15. Time keeping system
16. Maps
17. Embargoed Areas
18. Terrain description
19. Rules
20. Team leaders meeting
21. Start bibs
22. Anti doping
23. Weather
24. Health Care
25. Visas
26. Training Opportunities
27. Media Services
28. Live Coverage
29. Bicycle Washing



1. Organisers

IOF - International Orienteering Federation
www.orienteering.org



ÖFOL - Austrian Orienteering Federation
www.oefol.at

Prinz Eugen Str. 12,
 1030 Wien - Austria
office@oefol.at
 +43 (0)1 5050393



WMTBOC - organising committee

3912 Grafenschlag 106
 Austria
<http://www.wmtboc2018.at/mtbowc2017/>

+43 (0)660 3184440
 (Tel. open from 1. 6.)
office.wmtboc2018@gmail.com



Patrons of the event:

Mag. Hans Peter Doskozil, Minister of Sport in Austria
 Mag. Johanna Mikl – Leitner, Deputy Governor of Lower Austria
 Dr. Petra Bohuslav, Country Commissioner for Sports
 NR Angela Fichtinger, Mayor of Bad Traunstein
 Herbert Prinz, Mayor of Zwettl
 Robert Hafner, Mayor of Grafenschlag

Organising Committee:

Event director:	Paul Grün
Event director - deputy:	Ewald Mayer
Event Center Administrator:	Karin Irk
Finance:	Sigrid Grün
Competition Management:	Valentin Pidner, Harald Lipphart, Siegfried Seiner
IT, Timekeeping:	Eugen Kainrath, Markus Plohn, Erich Göschl
Logistics:	Peter Nebel
Course setters:	Gottfried Tobler, Walter Dravetz, Thomas Wieser
Media:	Elisabeth Kirchmeir, Traude Fesselhofer, Nathalie Huber

2. Event Adviser

IOF adviser: David Hlavac
National adviser: Wolf Eberle

3. Event Center

**Vocational school
"Landwirtschaftliche
Fachschule (LFS) Edelhof"**

<https://www.lfs-edelhof.ac.at/>

Edelhof 1,
3910 Zwettl – Austria
GPS: 48°36,396'N, 15°13,349'E



4. General Information

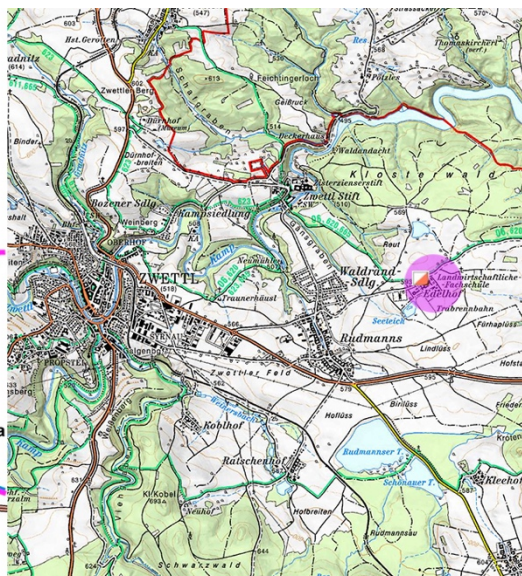
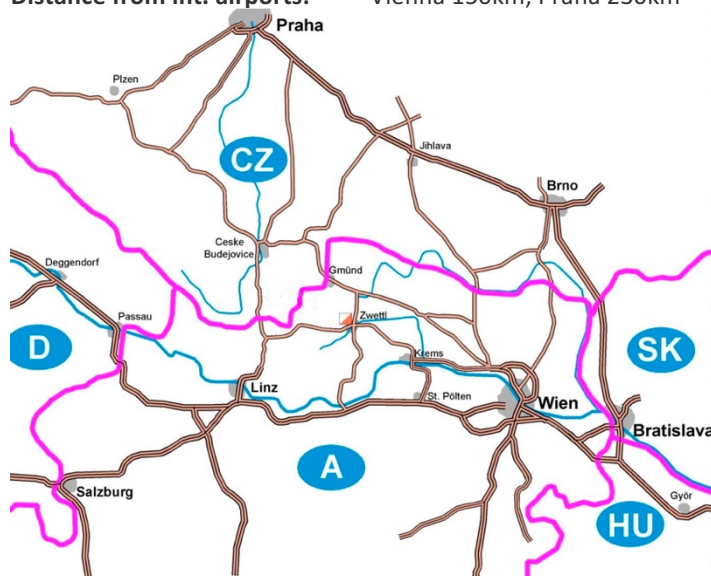
Austrian orienteering federation welcomes the participants of the World Mountain Bike Orienteering Cup 2017 round 1 in Zwettl.

Zwettl (11.000 inhabitants, 520 m above sea level) is the Waldviertel district capital of the Austrian state of Lower Austria. It is chiefly known as the location of Zwettl Abbey, first mentioned in October 1139.

The Waldviertel (Forest Quarter) is the north western region of the Austrian state of Lower Austria. It is bounded to the south by the Danube, to the southwest by Upper Austria, to the northwest and the north by the Czech Republic and to the east by the Manhartsberg (537 m).

5. Location

Event Center: LFS Edelhof, 3km outside of Zwettl
Distance from int. airports: Vienna 150km, Praha 230km



6. Program Overview

Friday, 2nd June	Arrival & Model Event
Saturday, 3rd June	IOF - World Cup Middle
Sunday, 4th June	IOF - World Cup Sprint
Monday, 5th June	IOF - World Cup Long, Departure
Tuesday, 6th June	Departure

7. Time table

Friday, 2nd June

10.00 – 21.00	Event office opening hours (EC= Event center)
12.00 – 15.00	Model Event in Roiten
14.00	Deadline for names/start group allocation for Middle (EC)
15.00	Prebooked rooms in Edelhof available
18.00 – 20.00	Dinner (EC)
19.00	Team leaders meeting(EC)

Saturday, 3rd June

Middle distance

07.00 – 09.00	Breakfast (EC)
09.00 – 16.00	Event office opening hours – competition center (CC)
10.00	First start – Middle distance
13.45	Prize giving ceremony – (CC)
14.00	Deadline for names/start group allocation for sprint (CC)
18.30 – 21.00	Event office opening hours (EC)
18.00 – 20.00	Dinner (EC)
19.00	Team leaders meeting(EC)

Sunday, 4th June

Sprint distance

07.00 – 09.00	Breakfast (EC)
09.00 – 16.00	Event Office opening hours – (CC)
10.00	First start – Sprint distance
12.45	Prize giving ceremony – (CC)
14.00	Deadline for names/start group allocation for long (at CC)
18.30 – 21.00	Event office opening hours (EC)
18.00 – 20.00	Dinner (EC)
19.00	Team leaders meeting(EC)

Monday, 5th June

Long distance

06.30 – 08.30	Breakfast
08.00 – 16.00	Event office opening hours – (CC)
09.00	First start – Long distance
14.45	Prize giving ceremony – (CC)
18.30 – 21.00	Event office opening hours (EC)
18.00 – 20.00	Dinner (EC)

Tuesday, 6th June

06.30 – 07.30	Breakfast (EC)
07.00 – 09.00	Office opening hours (EC)

8. Competition details

Model Event

The model Event in Roiten is accessible by bike or by car from the Event Center- Distance approximately 18 Km. 12.00 – 15.00 pm is the start of the Model Event with free start times. Maps and other equipment will be available at the event office.

Middle distance

Start	10.00
Start time interval	2 min
EC – Parking	22 Km
Distances	Finish(CC) - 400 m <- Parking -> 1500m – Start

Courses	Length(ideal)	climb	controls
Women	14,5 Km	360 m	20
Men	20,4 Km	470 m	28

There will be tents and shelter at start quarantine zone.

In finish there will be tents, catering, screens for watching competition and bike wash (near parking).

Prize giving ceremony at 13.45 at the competition center.

Sprint distance

Start	10.00
Start time interval	2 min
EC – Parking	4 Km
Distances	Finish(CC) - 100 m <- Parking -> 1500m – Start

Courses	Length(ideal)	climb	controls
Women	7,2 Km	80	23
Men	8,9 Km	90	25

There will be tents and shelter at start quarantine zone.

In finish there will be tents, catering, screens for watching competition and bike wash (near parking).

Prize giving ceremony at 12.45 at the competition center.

Long distance

Start	9.00
Start time interval	3 min
EC – Parking	17 Km
Distances	Finish(CC) - 400 m <- Parking -> 2500m – Start

Courses	Length(ideal)	climb	controls	refreshment control
Women	25,1 Km	875 m	16	1
Men	34,9 Km	1150 m	19	1

There will be tents and shelter at start quarantine zone.

In finish there will be tents, catering, screens for watching competition and bike wash (near parking).

Prize giving ceremony at 14.45 at the competition area.

9. Classes and participation restrictions

Classes

There is one class for women and one for men. There are no age restrictions.

Participations

According Competition Rules for International Orienteering Federation (IOF) Mountain Bike Orienteering (MTBO) Events 2017. The maximum entry per member federation per competition is 6 men and 6 women for all the competitions.

10. Entries

MTBO Worldcup

Entries have to be done via IOF eventor: <https://eventor.orienteering.org/Events>

Entry deadlines

Preliminary entry by 31th March 2017, giving:

- 📁 country
- 📁 number of competitors of each gender (preliminary)
- 📁 number of team officials
- 📁 category of accommodation
- 📁 team manager's name, address and telephone/fax numbers/email
- 📁 request for transportation

Final entry and entry of teams by 25th May 2017 giving:

- 📁 country
- 📁 number of competitors of each gender (final)
- 📁 accommodation and entry fees
- 📁 team manager's name, address and telephone/fax numbers/email
- 📁 each competitor's family name and first name, class or gender and year of birth
- 📁 detailed request for transportation
- 📁 family name and first name of each team official

Full payment for entry fees by 20th April 2017.

11. Entry Fees

World Cup

Accreditation fees (all participants: competitors and team officials)	30€ / person
Model event	10€ / person
Long distance	45€ / person
Middle distance.....	40€ / person
Sprint distance.....	35€ / person

12.Account details for payment

All payments are to be made to „OLZ UNION Waldviertel“ by bank transfer as follows

(all charges have to be paid by sender)

IBAN: **AT16 2027 2000 0068 9323**

SWIFT/BIC: SPZWAT21XXX

Bank: Waldviertler Sparkasse

Account name: Orientierungslaufzentrum UNION Waldviertel – WM

Adress: 3912, Grafenschlag 106

Entries to the World Cup, official accommodation and transport will be accepted and confirmed after the receipt of the transfer (payment before 20th April).

13. Transport (extra cost)

Transportation to and from Zwettl to Vienne International Airport can be ordered from the organizers for a extra fee (request with first entry).

1 – 3 person	one way	€ 270,--
4 – 8 person	one way	€ 380,--

Contact

office.wmtboc2018@gmail.com

Local transportation to and from the event center will be offered for a fee for teams in need for such a service when ordering in advance (request with first entry). **Payment before 20th April.**

14. Accommodation (extra cost)

Three different categories of accommodation in the vocational school Edelhof are offered by the organizers to ensure that all participants can find a place that suits their needs and budget.

All prices 2017 with half board per person and night (incl. all fees):

Double room	€ 48,-- (50 rooms)
Single person in double room	€ 60,--
Four-bed room (shower and toilets on the floor)	€ 40,-- (6 rooms)
Six-bed room (shower and toilets on the floor)	€ 37,-- (4 rooms)
Hard floor	€ 25,-- (Gym)
Tent- and Caravan place (400m from EC, with half board in EC)	€ 20,--

First come first service.

Dinner: please order, normal or vegetarian (no vegan) food
For information to the offered accommodation and booking (until 31. March). **Payment before 20th April**



Contact

Karin Irk

Karin.irk@gmx.at

15. Time keeping system

SPORTident Touchfree will be used for all events.

We recommend to use SI SIAC provided by the organizer without charge.

At the control stations we use **Touchfree for 30 cm**, at the finish a non contact station.

SPORTident Touchfree cards are provided without elastic band for hygienic reasons. **Competitors are responsible for elastic bands.**

16. Maps

New and updated MTB Orienteering maps

Scales: 1:7 500, 1:10 000, 1:15 000

Contour intervals: 5m

Terrain Type: hilly, various kinds of roads and paths.

All events will be organized in accordance with the IOF International Specification for MTB Orienteering Maps (2010).

Map details

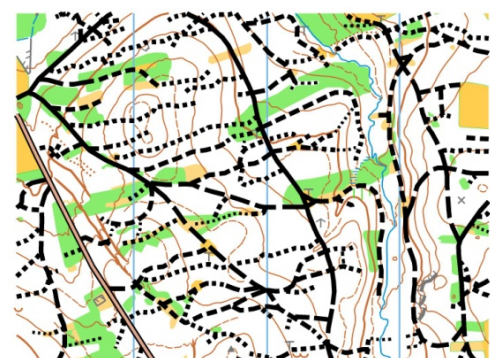
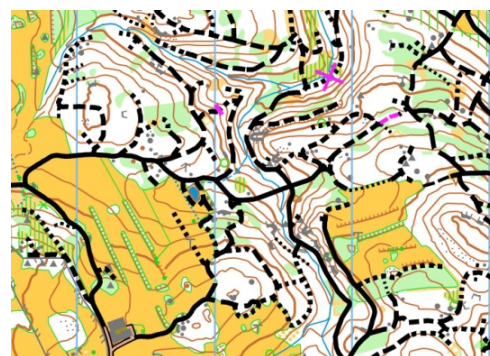
Long distance	1:15 000 / contour 5m
Middle distance	1:10 000 / contour 5m
Sprint distance	1:7 500 / contour 5m

The old maps of these areas are published on the event website:

■ Grafenschlag – Wielands (2010)

■ Roiten – Süd (2011)

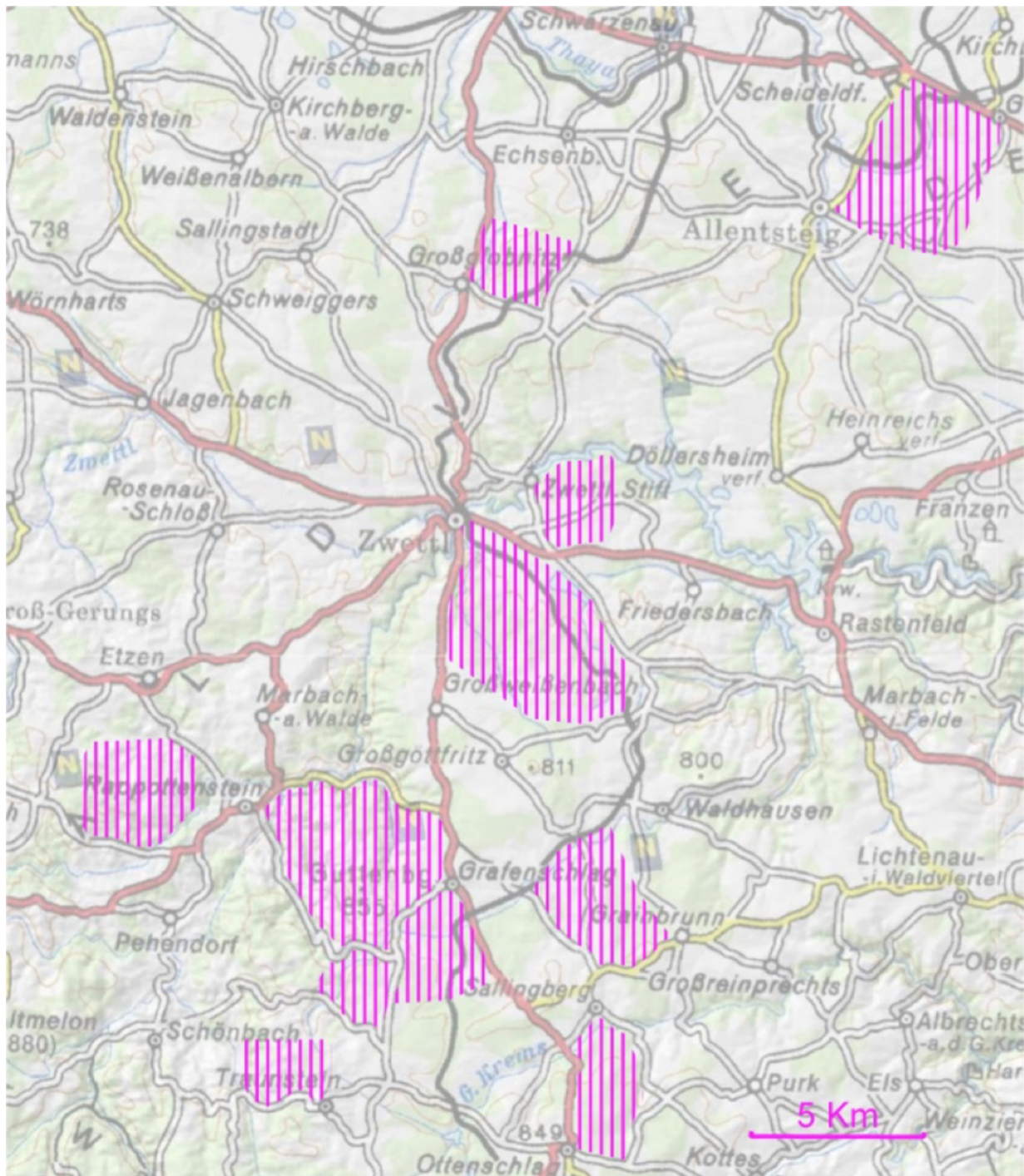
■ Rapottenstein – Ost (2014)



17. Embargoed areas

The areas are out of bounds for all potential participants and team members, including competitors, team leaders, coaches, doctors, escorts, and any other person who through their knowledge of the terrain may influence the result of the competitions.

Permission for access into embargoed terrain has to be requested from the organizer if needed.



18. Terrain description

Alternately forest and open area, dense tracks network, mostly good rideability. Some tricky steep sections.

Middle distance

1:10000; E 5m

Terrain hilly area with Forest and good rideable tracks network

Sprint distance

1:7500; E 5m

Terrain hilly area with forest and urban part with good rideable tracks and road network

Long distance

1:15000; E 5m

Terrain very hilly area with alternately forest and open area dense tracks and road network.

All the competitions area is open to public traffic. The courses cross several public roads. At critical places there will be marshal's to help safe crossing. Riders should follow the instruction of marshals. Still, it is the riders' responsibility to observe traffic rules and avoid unsafe practices.

19. Rules

All events will be organized in accordance with the Competition Rules for IOF MTB Orienteering Events, valid from 1 January 2017, and Special Rules for MTB Orienteering World Cup 2017.

International specification for MTBO Orienteering Maps 2010

Please consult: <http://orienteering.org/mtb-orienteering/rules/>

In this specific events:

❏ Riding off the track, trail or path (except marked routes) is forbidden.

❏ In Austria you drive on the RIGHT side of road.

Therefore you must ride on the RIGHT side on all roads and tracks.

Overtaking slower riders should be done by the LEFT.

20. Team leaders meeting

Team leaders meeting will take place at 19.00 pm in Edelhof Room: "Alter Speisesaal" (near room Nr. 30) every evening preceding every World Cup competition day.

The participation in the Team leaders meeting is limited to 3 officials per team.

21. Start bibs

MTB-O World Cup participants will receive start bibs, according to the start list minutes in the evening before the competition on team leaders meeting. The start bibs should be attached in front of the bike and on the back of the rider.

22. Anti Doping

Doping is forbidden. The IOF Anti-Doping Rules apply to all IOF events and the IOF Council may require doping control procedures to be conducted. It is the responsibility of the competitors to obtain any required therapeutic use exemption (TUE) certificate.

23. Weather

Waldviertel is between 500 – 900m above sea level. Average temperature in June is 18,7° C, in the night about 8° C. Rain is possible (average 11 days in June).

24. Health Care

The Organizer will provide first aid at the competition center and at the arenas of each event.

The Organiser will not bear costs connected to health insurance of participants. We recommend each individual to arrange their own personal health insurance. Participants take part at their own risk.

THE NEAREST HOSPITAL

Landeskrlinikum Zwettl
Propstei 5
3910 ZWETTL
+43 (0)2822 9004 0

25. Visas

ENTRY PERMITS TO AUSTRIA

Austria is a full Schengen member state. You can find a list of countries which need a visa for Austria here:

http://www.bmi.gv.at/cms/BMI_Fremdenpolizei/visumspflichten/start.aspx

Visas have to be applied for at your nearest Austria embassy. The Austrian Orienteering Federation - ÖFOL - will assist participants as required to obtain visas.

26. Training Opportunities

Beside the Model event we will offer a second training map with control flags for 1st and 2nd June. Details in Bulletin 4.

27. Media Services

Media representatives are cordially invited to Zwettl. Registration for media representatives should be done via email not later than 25th Mayl 2017

Contact

Nathalie Huber
nh@oefol.at

28.Live Coverage

At least 90 GPS units will be used and allocated to women and men athletes each day. List of athletes will be presented at team leader meeting.

The GPS device should be collected in the start area (or start quarantine) at least 20 minute before start. The GPS device has to be returned after finish each day.

GPS tracks will be displayed in finish. All tracks will be available on the event website after the event.

29. Bike washing

Bicycle washing facilities and secure bike storing will be available at the EC.