



MTBO Worldcup

June 2 – 5, 2017 | Waldviertel, Austria

Bulletin 4

SPORT.LAND. 

Waldviertler
SPARKASSE 

Preamble

Dear friends of Mountain Bike Orienteering!

On behalf of the Austrian Orienteering Federation it is my great pleasure to welcome you to the Waldviertel region of Lower Austria!

The MTBO World Cup 2017 in the vicinity of Zwettl is in its own right and as run-up event to the 2018 World, Junior World and European Youth MTBO Orienteering Championships one of the most important orienteering events held in Austria this year. We are excited to host the best athletes in Mountain Bike Orienteering from 18 different countries. Together with the participants in the 3 Days MTBO Festival - including three "Austria Cup" races - several hundred MTBO aficionados are expected to be attending.



The organizing team comprised of three Austrian orienteering clubs along with several other volunteers has been working hard to ensure a high quality event and a memorable and enjoyable experience for all participants, officials, spectators and guests - many thanks to the team for their dedication and effort. Thanks also go to all landowners, the municipalities and organizations in the region, the state government and all sponsors, without whom the realization of this event would not have been possible. To all competitors I wish the best of luck in the accomplishment of their goals, and to all a great time in the hills and forests of the beautiful Waldviertel!

Erik Adenstedt

President of the Austrian Orienteering Federation

Content

1. Organisers
2. Event Advisers
3. Event Centre
4. General Information
5. Time table
6. Team leaders meeting
7. Entries overview
8. Weather
9. Health Care
10. Visas
11. Media Services
12. Transport
13. Accommodation
14. Bike storage and bike wash
15. Bike shop
16. Catering
17. Training
18. Rules
19. Anti Doping
20. Members of Jury
21. Classes and participation restrictions
22. Starting order
23. Time keeping system
24. Embargoed Areas
25. Maps
26. Live Coverage, GPS Tracking
27. Start bibs
28. Opening ceremony
29. Prize giving ceremonies
30. Start order
31. Competition details



1. Organisers

International Orienteering Federation

www.orienteering.org



Austrian Orienteering Federation

www.oefol.at

Prinz Eugen Str. 12,
1030 Wien – Austria
office@oefol.at
+43 (0)1 5050393



WMTBOC - organizing committee

www.wmtboc2018.at

+43 (0)660 3184440
(Tel. open from 1.6.)
office.wmtboc2018@gmail.com



Patrons of the event

Mag. Hans Peter Doskozil, Minister of Sport in Austria
Mag. Johanna Mikl – Leitner, Governor of Lower Austria
Dr. Petra Bohuslav, Country Commissioner for Sports
NR Angela Fichtinger, Mayor of Bad Traunstein
Herbert Prinz, Mayor of Zwettl
Robert Hafner, Mayor of Grafenschlag

Organising Committee

Event director:	Paul Grün
Event director - deputy:	Ewald Mayer
Event centre administration:	Karin Irk, Karin Walch
Finance:	Sigrid Grün
Competition management:	Valentin Pidner, Harald Lipphart, Siegfried Seiner
IT, Timekeeping:	Eugen Kainrath, Markus Plohn, Erich Göschl
Logistics:	Peter Nebel
Course planners:	Gottfried Tobler, Walter Dravetz, Thomas Wieser
Media:	Elisabeth Kirchmeir, Traude Fesselhofer, Nathalie Huber

2.Event Advisers

IOF Advisor: David Hlavac
National Advisor: Wolf Eberle

3.Event Centre

Vocational school
"Landwirtschaftliche
Fachschule (LFS) Edelhof"

www.lfs-edelhof.ac.at

Edelhof 1,
3910 Zwettl – Austria
GPS: 48° 36,396´N, 15° 13,349´E
+43(0)660 3184440
Event telephone open from 1. 6.



Event Centre: 3km outside Zwettl
Distance from int. airports: Vienna 150km, Praha 230km

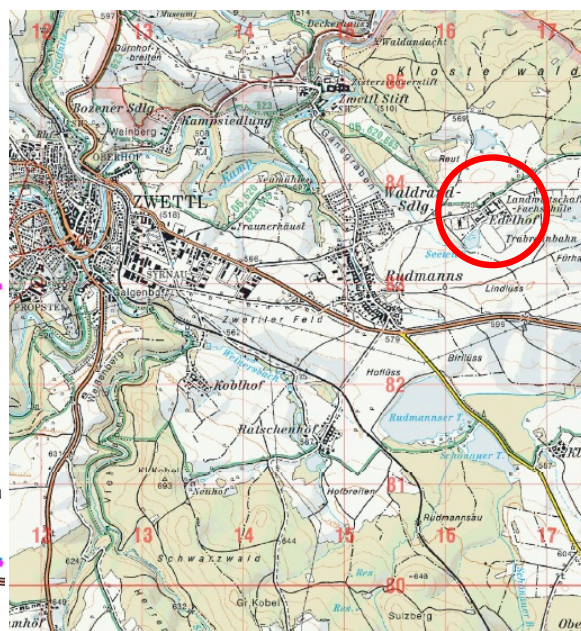
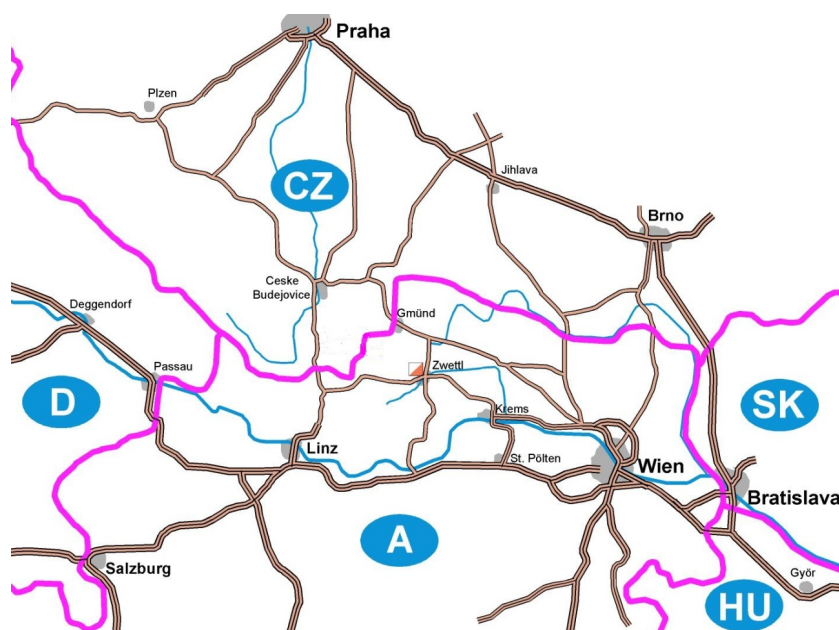
	At the event centre	At the competition centre
Friday, 2 June	10.00 - 21.00	
Saturday, 3 June	18.30 - 21.00	09.00 - 16.00
Sunday, 4 June	18.30 - 21.00	09.00 - 16.00
Monday, 5 June	18.30 - 21.00	08.00 - 16.00
Tuesday, 6 June	07.00 – 9.00	

Accreditation

Accreditation takes place at the Event Office. For World Cup participants, one team official should collect the accreditation for the whole team. As part of this process, the team members' passports must be shown to prove nationality and full passport-holding citizenship of the country of their Federation.

Each Team will receive an information pack that consists of:

- Bulletin 4 for each team member
- A SIAC (SI active card) for each competitor
- Accreditation cards for each team member
- Tourist brochures and maps
- A gift from the Waldviertel tourist centre



4. General Information

The Austrian Orienteering Federation welcomes the participants of the World Mountain Bike Orienteering Cup 2017 round 1 in Zwettl. Zwettl (11,000 inhabitants, 520 m above sea level) is the Waldviertel district capital of the Austrian state of Lower Austria. It is chiefly known as the location of Zwettl Abbey, first mentioned in October 1139. The Waldviertel (Forest Quarter) is the north-western region of the Austrian state of Lower Austria. It is bounded to the south by the Danube, to the southwest by Upper Austria, to the northwest and the north by the Czech Republic and to the east by the Manhartsberg (537 m).

5. Programme

Friday, 2 June

10.00 – 21.00	Event office open at Event Centre (EC)
12.00 – 15.00	Model Event in Roiten
14.00	Deadline for names/start group allocation for Middle (EC)
15.00	Pre-booked rooms in Edelhof available
17.30 – 18.30	Opening ceremony (EC)
18.00 – 20.00	Dinner (EC)
19.00	Team leaders' meeting (EC)

Saturday, 3 June	Middle distance
07.00 – 09.00	Breakfast (EC)
09.00 – 16.00	Event office open at Competition centre (CC)
10.00	First start – Middle distance
13.45	Prize-giving ceremony – (CC)
14.00	Deadline for names/start group allocation for sprint (CC)
18.30 – 21.00	Event office open at EC
18.00 – 20.00	Dinner (EC)
19.00	Team leaders' meeting (EC)

Sunday, 4 June	Sprint distance
07.00 – 09.00	Breakfast (EC)
09.00 – 16.00	Event Office open at CC
10.00	First start – Sprint distance
12.45	Prize-giving ceremony – (CC)
14.00	Deadline for names/start group allocation for long (at CC)
18.30 – 21.00	Event office open at EC
18.00 – 20.00	Dinner (EC)
19.00	Team leaders' meeting (EC)

Monday, 5 June	Long distance
06.30 – 08.30	Breakfast
08.00 – 16.00	Event Office open at CC
09.00	First start – Long distance
14.45	Prize-giving ceremony – (CC)
18.30 – 21.00	Event office open at EC
18.00 – 20.00	Dinner (EC)

Tuesday, 5 June	
06.30 – 07.30	Breakfast (EC)
07.00 – 09.00	Event office open at EC

6.Team leaders' meeting

The team leaders' meetings will take place at 19.00 at Edelhof in the "Alter Speisesaal" (near room no. 30) on the evening before each World Cup competition day.

Participation at the team leaders' meeting is limited to 3 officials per team.

7.Entries overview

Federation	Men	Women	Officials	Total
Austria	7	4	2	13
Czech Republic	6	6	1	13
Denmark	2	3	1	6
Estonia	2			2
Finland	6	6	2	14
France	6	3	1	10
Germany	2	1		3
Great Britain		2	1	3
Hungary	1	2		3
Italy	4		1	5
Latvia	2	1		3
Lithuania	5	3		8
Portugal	4	1	1	6
Russian Federation	6	6		12
Slovenia	5	1		6
Spain	3			3
Sweden	5	2	2	9
Switzerland	2	2	1	5
Ukraine	2			2
Total	70	43	13	126

8.Weather

The Waldviertel region lies at 500 – 900m above sea level. The average day temperature in June is 18.7° and at night around 8° C. Rain is possible (average 11 days in June).

9. Healthcare services

The organizers will provide first aid at the competition centre and at the arenas of each event.

The organizers will not be liable for any health insurance costs for participants. We recommend that all participants arrange their own personal health insurance. Participants take part at their own risk.

The nearest hospital:

Landeskrlinikum Zwettl
Propstei 5
3910 ZWETTL
+43 (0)2822 9004 0

10. Visas

Austria is a full Schengen member state. You can find a list of countries whose citizens need a visa for Austria here:

http://www.bmi.gv.at/cms/BMI_Fremdenpolizei/visumspflichten/start.aspx

Visas must be applied for at your nearest Austrian embassy. The Austrian Orienteering Federation (ÖFOL) will assist participants as required to obtain visas.

11. Media services

Media representatives are cordially invited to Zwettl. Registration for media representatives should be made by email no later than 25 May 2017

Contact:

Nathalie Huber
nh@oefol.at

12. Transport (extra cost)

All competitions are reachable by bike

EC – Model event 18 Km

EC – Middle distance 25 Km

EC – Sprint competition 4 Km

EC – Long competition 17 Km

Local transportation from the event centre to arenas will not be provided as no requests for such a service were received by the 30 March deadline.

13.Accommodation (extra cost)

Three different categories of accommodation in the vocational school Edelhof were offered by the organizers to ensure that all participants can find accommodation that meets their requirements and budget.

14.Bike storage and bike wash

Bicycle washing facilities and secure bike storage will be available at the EC, open between 7.00 and 21.00 o'clock.

15.Bike shop

The SPORT KASTNER bike shop at Landstraße 3, 3910 Zwettl, will offer a bike repair service in the shop on the following days: .

Thursday, 8.30 – 12.00, 13.30 – 18.00

Friday, 8.30 – 18.00

Saturday, 8.30 – 13.00

Outside shop opening hours, please contact the event centre team.

16.Catering

Catering services (serving snacks and small warm meals) will be available at the competition arenas.

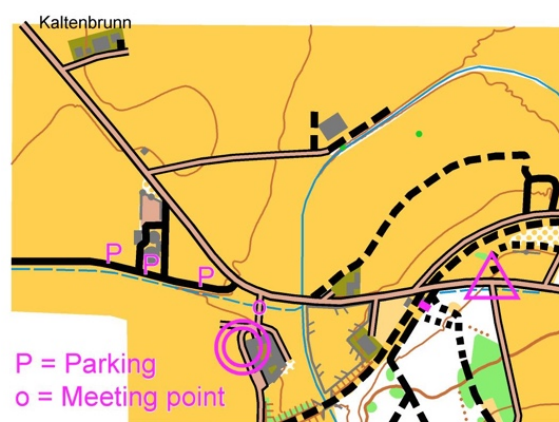
17.Training

In addition to the Model event, we will provide a second training map with control flags near Kaltenbrunn.

1 June: 14.00 – 17.00 and 2 June: 15.00 – 18.00

The map will be available at the meeting point (48°29,916´N, 15°11,788´E) for € 4,-

Map scale 1:10 000 and 1:7 500



Warm Up and SIAC testing area

For all teams who arrive too late to test SIAC at the model event, we will provide a small map around the event centre on Friday, 2 June between 15.00 – 19.00

18. Rules

All events will be organized in accordance with the Competition Rules for IOF MTB Orienteering Events, valid from 1 January 2017, and Special Rules for MTB Orienteering World Cup 2017.

International specification for MTBO Orienteering Maps 2010

Please consult: <http://orienteering.org/mtb-orienteering/rules/>

In these specific events:

- Riding off the track, trail or path (except marked routes) is forbidden.
- In Austria you drive on the RIGHT side of road.

Therefore, you must ride on the RIGHT side on all roads and tracks.

Overtaking slower riders should be done on the LEFT.

19. Anti-doping

Doping is forbidden. The IOF Anti-Doping Rules apply to all IOF events and the IOF Council may require doping control procedures to be conducted. It is the responsibility of the competitors to obtain any required therapeutic use exemption (TUE) certificate.

20. Members of the Jury

Simon Seger (SUI)

Giuseppe Simoni (ITA)

Sandor Talas (HUN)

21. Classes and participation restrictions

Classes

There is one class for women and one for men. There are no age restrictions.

Participation

In accordance with the Competition Rules for International Orienteering Federation (IOF) Mountain Bike Orienteering (MTBO) Events 2017. The maximum entry per member federation per competition is 6 men and 6 women for all the competitions.

Competitors who are representing a Federation must have full passport-holding citizenship of the country of that Federation.

22.Starting order

Each team will receive a starting group allocation form for each discipline with a list of all entered competitors. The team leader will choose the required starting group for each competitor by crossing the check box. Red and orange groups will be allocated.

Teams are required to submit name entries for the Long/Middle/Sprint distances competitions by noon (12.00) the day before the competition. Teams that do not submit their requested allocation of competitors in start groups by the deadline are not guaranteed that their team members will start the competition in the desired order.

23.Timekeeping system

SPORTident will be used for all events.

We recommend using SI SIAC, which will be provided by the organiser free of charge.

The control stations will function with a touch-free distance of 30 cm. There will be a non-contact station at the finish.

SPORTident cards are provided without the usual nylon band for hygiene reasons.

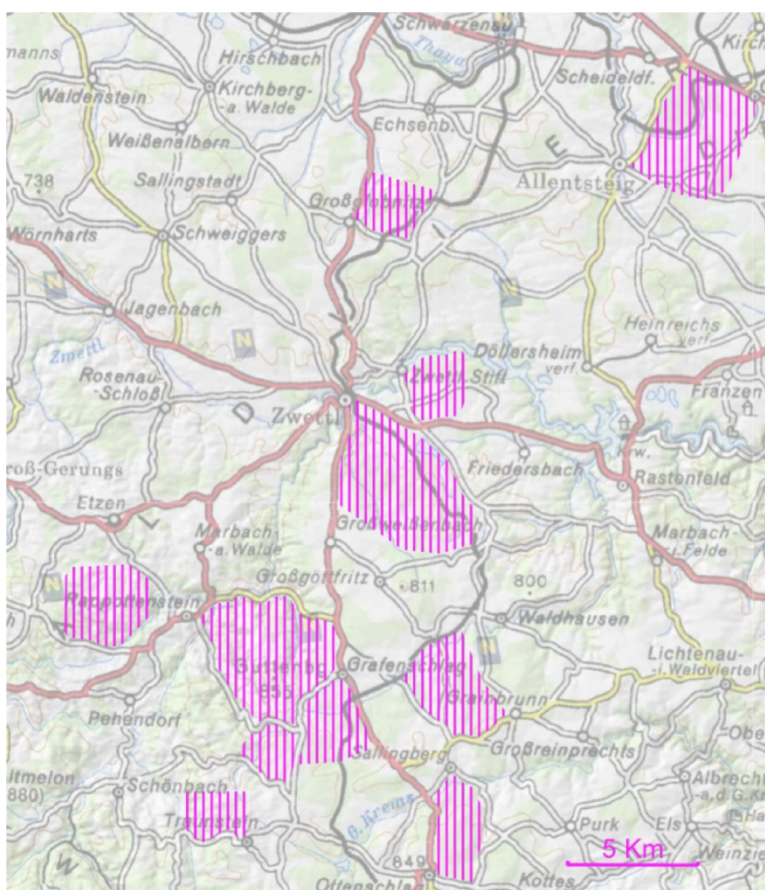
Competitors are responsible for organising their own nylon bands.

There will be elastic bands for sell in the EC!

24.Embargoed areas

The areas indicated on the map are out of bounds for all potential participants and team members, including competitors, team leaders, coaches, doctors, escorts, and any other person who through their knowledge of the terrain may influence the result of the competitions.

Permission for access into embargoed terrain has to be requested from the organizer if needed.



25. Maps

New and updated MTB orienteering maps

Scales: 1:7 500, 1:10 000, 1:15 000

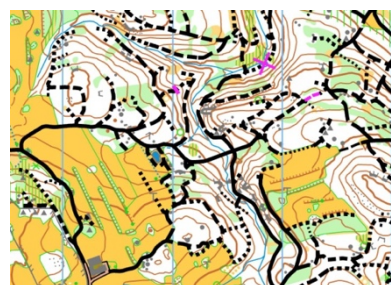
Contour interval: 5m

Terrain type: hilly, various kinds of roads and paths.

All maps will be surveyed in May 2017 in accordance with the IOF International Specification for MTB Orienteering Maps (2010).

Map details

Long distance	1:15 000 / contour interval 5m
Middle distance	1:10 000 / contour interval 5m
Sprint distance	1:7 500 / contour interval 5m



26. Live coverage, GPS tracking

At least 90 GPS units will be used and allocated to women and men athletes each day. The list of such athletes will be presented at the team leaders' meeting.

The GPS device must be collected in the start area (or start quarantine) at least 20 minutes before starting. The GPS device must be returned after the finish each day.

GPS tracks will be displayed at the finish. All tracks will be available on the event website after the event.

27. Start bibs

MTB-O World Cup participants will receive start bibs, according to the start list minutes, in the evening before the competition at the team leaders' meeting. The start bibs should be attached to the front of the bike and on the back of the rider.

28. Opening ceremony

On Friday, 2 June at 17.30, there will be a small opening ceremony in the front of the event centre.

29. Prize-giving ceremony

The prize-giving ceremony will be held at the competition arena immediately following the deadline for complaints.

Any complaint shall be made in writing and submitted to the Organisers in the Finish area. The deadline for complaints is 20 minutes from the finish of the competitor related to the complaint, unless there are valid exceptional circumstances explained in the complaint.

According to the Rule 28.4, a protest fee of 50 EUR (or the equivalent in local currency) shall be paid to the IOF Senior Event Adviser in cash when making a protest.

In line with the IOF rules, podium finishers are requested to dress in team uniforms with appropriate shoes (i.e. no flip-flops etc.) and refrain from taking to the podium items such as hats, sunglasses, headbands and other similar items. No accompanying person should be brought to the podium.

30. Starting procedure

- 3 minutes: Number check and SI clear
- 2 minutes: SI check (= SI on)
- 1 minutes: The athlete is allowed to collect the map and move to the start line. It is the competitor's responsibility to take the correct map.
- 0 minutes: Start from a stationary position (one foot on the ground)

After the start, competitors must follow a mandatory route (marked by red tapes) to the start point marked by a control flag in the terrain. The distance between pre start and the start point will be notified in the start area.

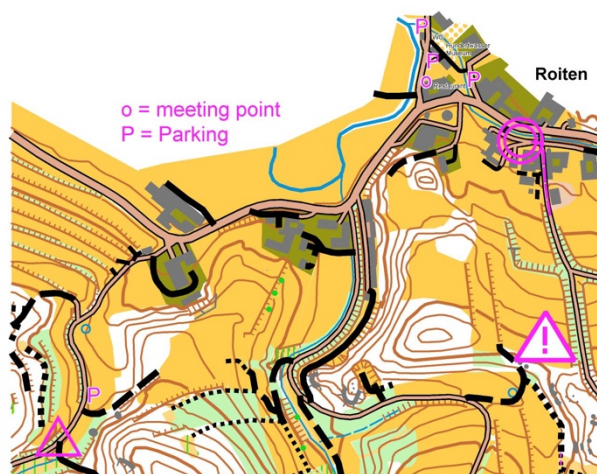
31. Competition details

Model Event, 2 June, Roiten

Location: 48°31,844'N, 15°07,564'E

The model event in Roiten is accessible by bike or by car from the Event Centre-distance approximately 18 Km.

12.00 – 15.00 pm is the start of the model event with free start times. All controls are touch-free controls. Maps (1:15 000) will be available at the event office or at the meeting point for € 10.



Middle distance, 3 June, Dietmanns

Location: 48°27,768´N, 15°08,367´E

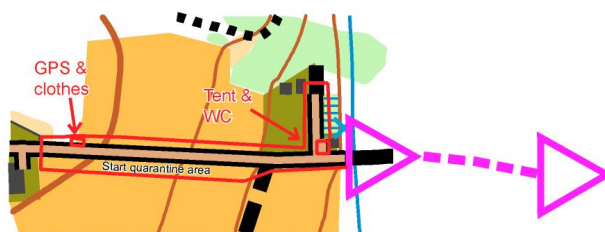
Start and quarantine times

Start: 10.00

Start interval 2 min

Start quarantine from 11.00

Finish quarantine until 11.00



There will be tents and shelter at the start quarantine zone.

At the finish, there will be tents, catering, screens for watching the competition and bike wash (near parking)



Distances

EC – Parking 22 km

Finish (CC) - 400 m <- Parking -> 1500m – Start

Courses	Length (ideal)	climb	controls
Woman	14.5 km	360 m	20
Men	20.4 km	530 m	28

Map

“Dietmanns – Northwest” 1: 10 000, E 5m, Size A4+ (31 x 22 cm),

PRETEX paper, waterproof but not tear-proof.

There is a **map change** in the **Men’s category**.

The competitors will receive **both maps at the start**.

Terrain description

Hilly area with a lot of forest and a good rideable track network.

Quarantine

Competitors must enter the start quarantine before the relevant deadline and not to leave finish quarantine before the time limit. Otherwise they will not be allowed to participate in the race or will be disqualified from the competition!

Prize-giving ceremony at 13.45 at the competition centre.

Sprint distance, 4 June, Zwettl

Location: 48°36,272'N, 15°10,663'E

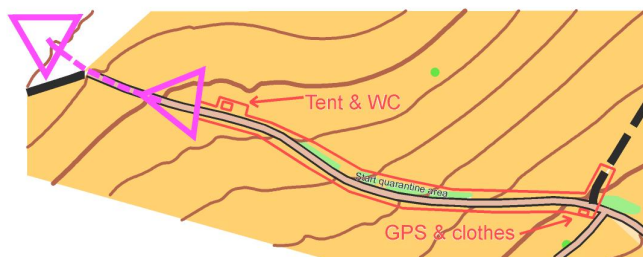
Start and quarantine times

Start: 10.00

Start interval 2 min

Start quarantine from 11.00

Finish quarantine until 11.00



There will be tents and shelter at the start quarantine zone.

At the finish, there will be tents, catering, screens for watching the competition and bike wash (near parking)



Distances

EC – Parking 4 km

Finish (CC) - 100 m <- Parking -> 1500m (+90m climb) – Start

Courses	Length (ideal)	climb	controls
Woman	8.1 km	175 m	21
Men	8.7 km	180 m	21

Map

Map: “Zwettl - Koblhof” 1:7 500, E 5m, Size A4+ (31 x 21.5 cm), PRETEX paper, waterproof but not tear-proof.

1 map change in Men Category. The rider get both maps at the start.

Terrain description

Hilly area with forest and urban part with good rideable tracks and road network

The competition area is open to public traffic. The courses cross several public roads. It is the riders' responsibility to observe traffic rules and avoid unsafe riding.

Quarantine

Competitors must enter the start quarantine before the relevant deadline and not to leave finish quarantine before the time limit. Otherwise they will not be allowed to participate in the race or will be disqualified from the competition!

Prize-giving ceremony at 12.45 at the competition centre.

Long distance, 5 June, Grafenschlag

Location: 48°30,030´N, 15°10,076´E

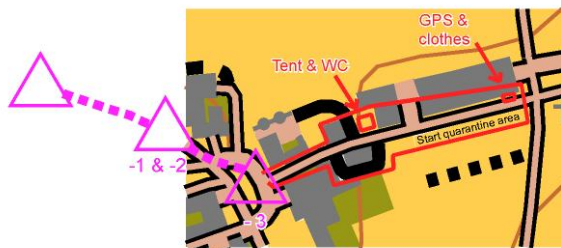
Start and quarantine times

Start: 9.00

Start interval 3 min

Start quarantine from 10.30

Finish quarantine until 10.30



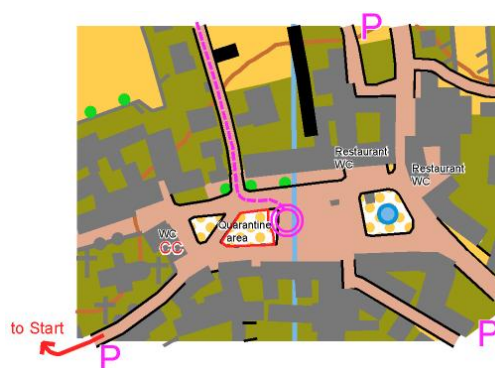
There will be tents and shelter at the start quarantine zone.

At the finish, there will be tents, catering, screens for watching the competition and bike wash (near parking).

Distances

EC – Parking 17 km

Finish (CC) - 400 m <- Parking -> 2500m – Start



Courses	Length (ideal)	climb	controls	Refreshment control
Woman	25.1 km	875 m	16	1
Men	34.9 km	1150 m	19	1

Map

Map: “Grafenschlag - Guttenberg” 1:15 000, E 5m, Size A3 (40.8 x 29.5 cm), PRETEX paper, waterproof but not tear-proof.

Terrain description

Very hilly area with forest and open areas and a dense track and road network.

Quarantine

Competitors must enter the start quarantine before the relevant deadline and not to leave finish quarantine before the time limit. Otherwise they will not be allowed to participate in the race or will be disqualified from the competition!

Prize-giving ceremony at 14.45 at the competition centre.

Special map symbols

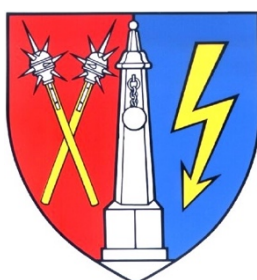
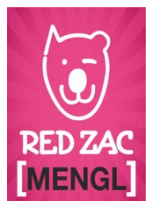
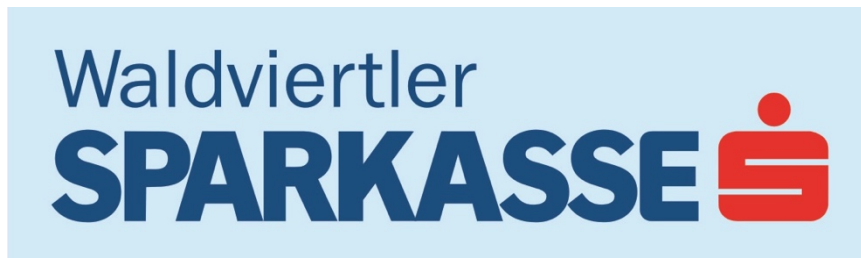
Note the use of the following overprint symbols at all the events.



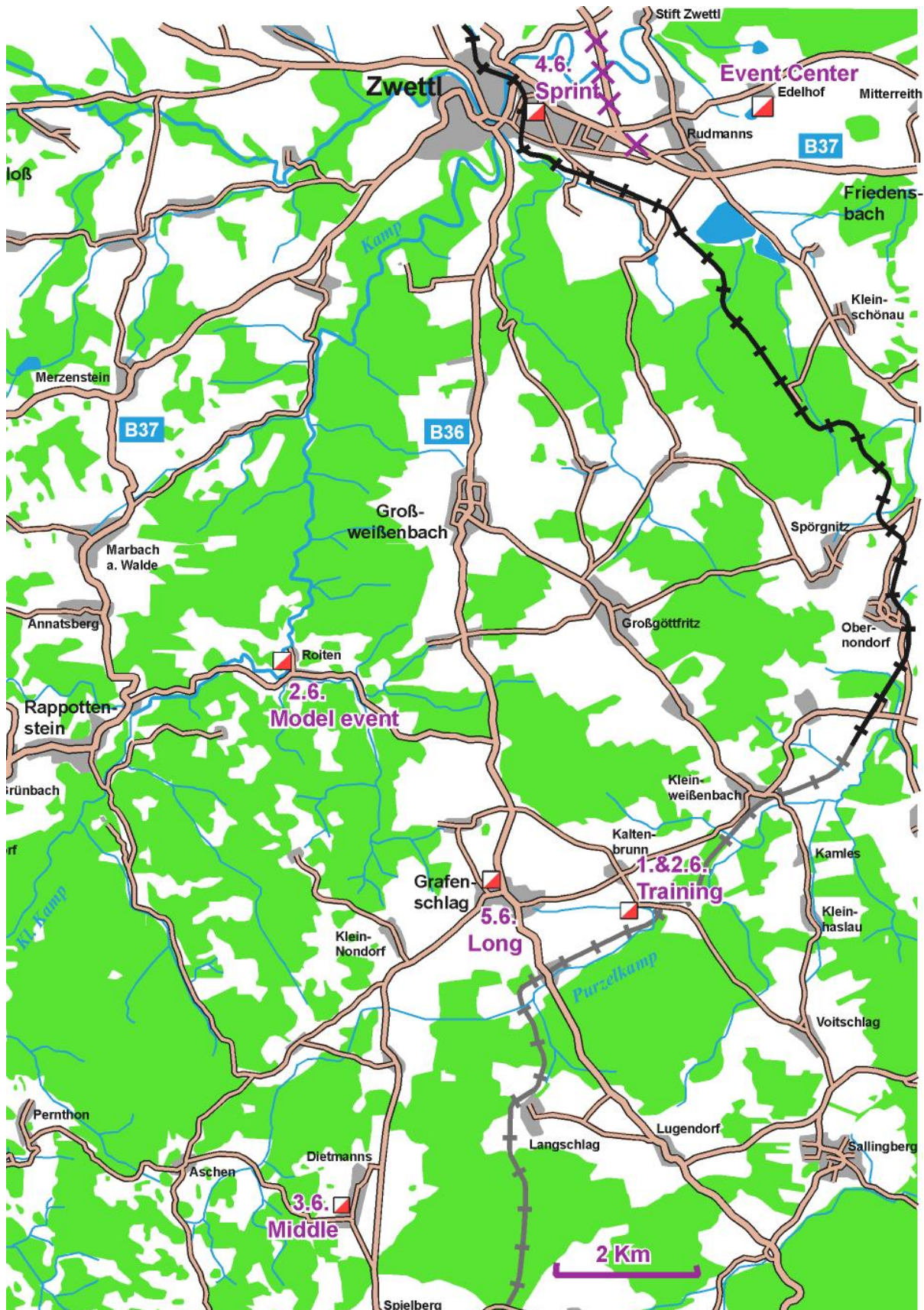
705 Marked routes. This symbol is used to connect two paths. Marked in the terrain with flags.



708 Crossing point. This symbol is used in combination with barriers or marked routes



Overview





INTERNATIONAL ORIENTEERING FEDERATION