



WMTBOC JWMBTOC EYMTBOC

5th - 12th August 2018

Zwettl





Team Leader Meeting

11th August 2018



Australia



Bulgaria



Czech Republic



Denmark



Estonia



Finland



France



Germany



Great Britain



Hong Kong



Hungary



Italy



Japan



Kirgistan



Latvia



Lithuania



New Zealand



Norway



Poland



Portugal



Russian Federation



Slovakia



Slovenia



Spain



Sweden



Switzerland



Turkey



Ukraine



United States



Austria



Team Leader Meeting 11th August 2018

Sprint

IOF Adviser

Simon Seger

Event Director

Paul Grün

Course Planner

Hans Borsitzky

National Advisers

Thomas Wieser
Wolfgang Pötsch



Sprint 12th August

- Allentsteig

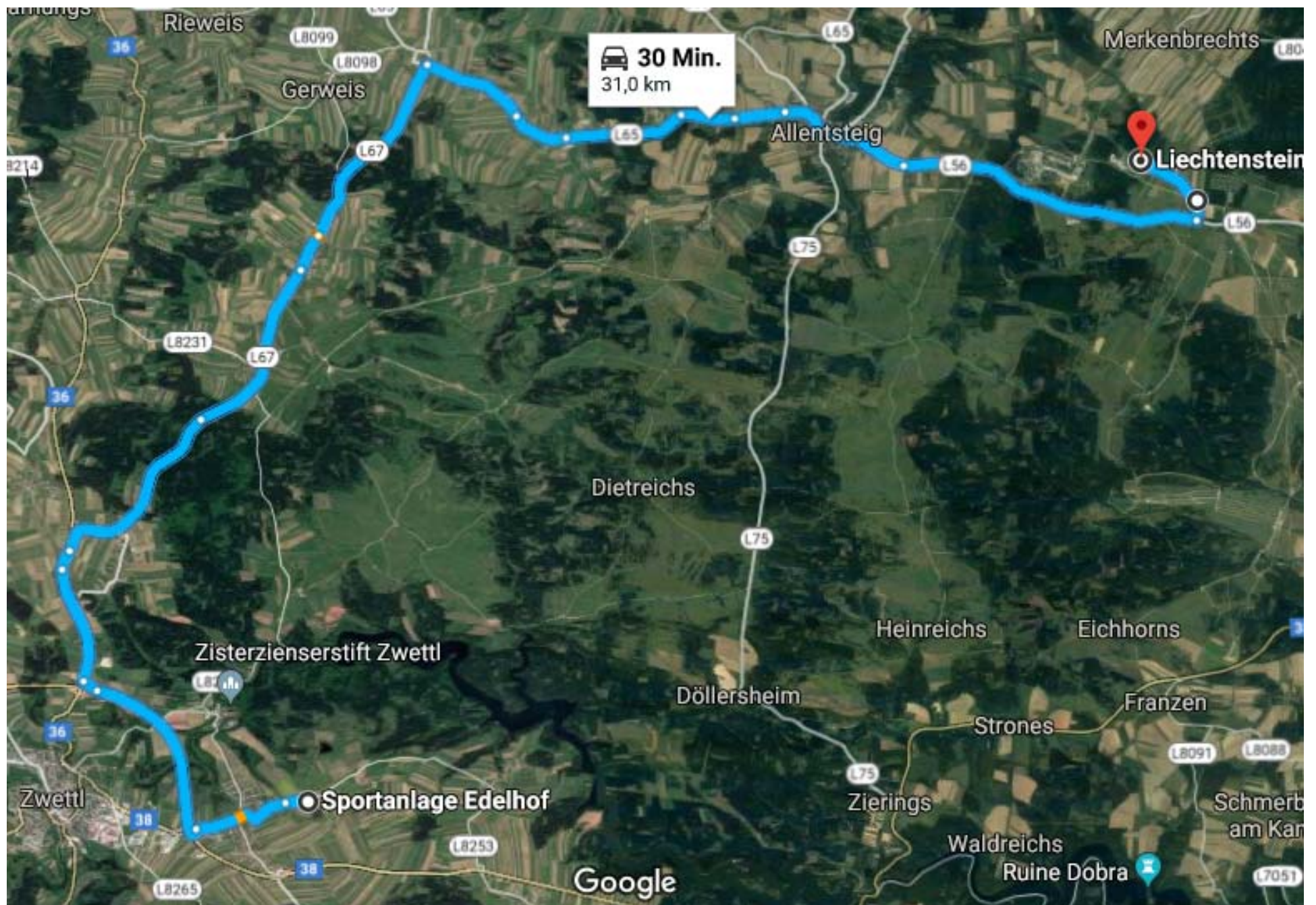
- EC – CC ~ 26 km
- 15,39296 48,69129
- Map scale: 1: 7.500, Contours 5m
- Map size: 29,6 x 21,0 cm, Pretex
- 2 maps W 21 and M21
- Maps will not be collected after race
- Bag transport from start to finish-quarantine till 11:35
- Bag deposit at the entrance of the start-quarantine after 11:35



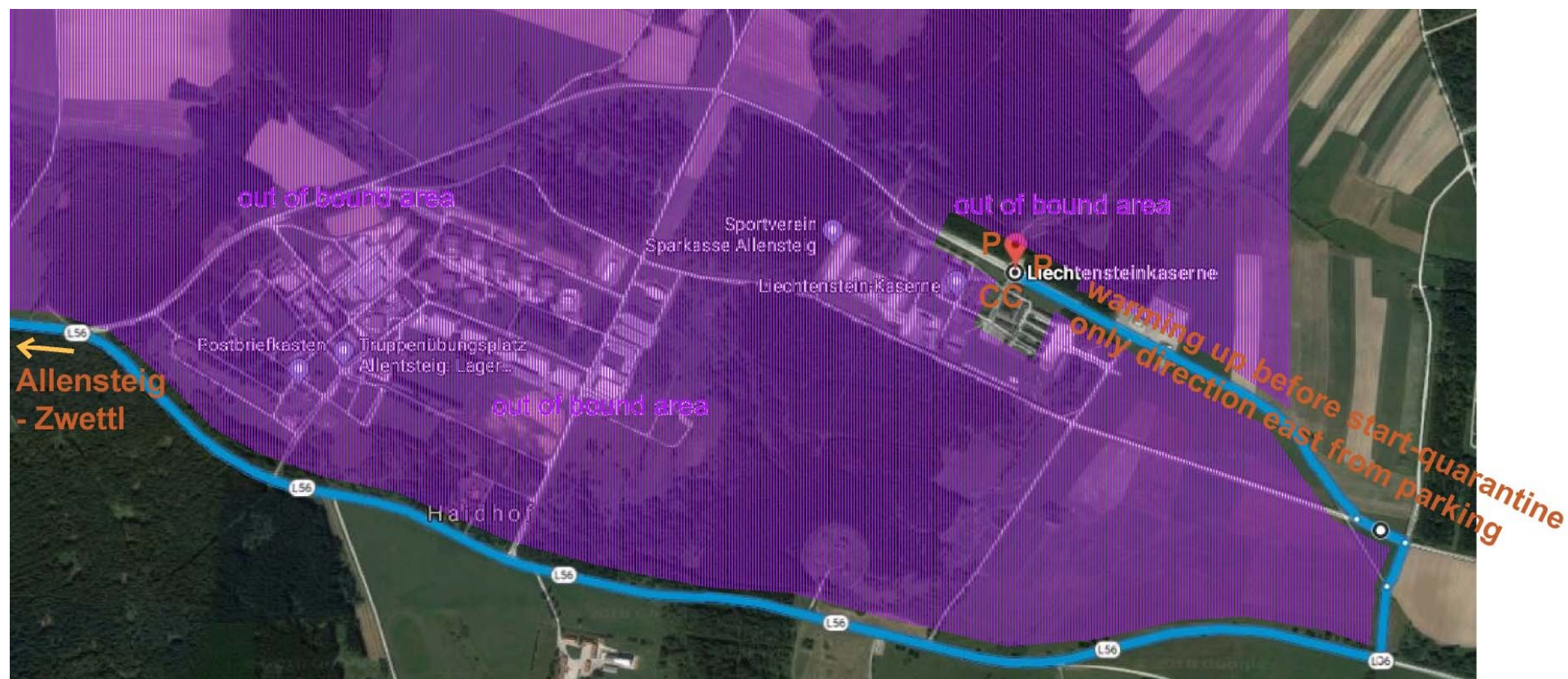
- Schedule and course data: **change of quarantine time**

Military training area and shooting ranges





EC – CC (Liechtensteinkaserne Allensteig) 31km; 30 min by car



CC (Liechtensteinkaserne Allenstein) with competition area,
allowed route to parking and warming up before start-quarantine





Schedule of the competition day	
9:30	First start of M17
9:41	First start of W17
9:51	First start of M20
10:00	First start of W20
11:30	First start of M21
11:41	First start of W21
11:30	Start quarantine activated, GPS maps on
11:35	Finish Quarantine ends
15:05	Deadline for complaints (or 15 min. after finish of the athlete)
15:20	Flower ceremony
15:15 – 15:45	Start public race
19-24h	Banquet (EC)



Sprint distance Sunday, 12 th August				
Start interval	2 min			
Courses	Length (ideal)	Climb	No. of controls	Winning times
W21	8,5 km	50 m	23	20 - 25
M21	9,9 km	65 m	30	20 - 25
W20	6,1 km	35 m	18	16 - 20
M20	7,5 km	45 m	24	16 - 20
W17	6.0 km	30 m	16	15 - 20
M17	7,1 km	40 m	21	15 - 20



Symbol 402 Open land with scattered trees. This is used with orange dotes. You can ride through this area (special symbol)



Steps are marked on
map (special symbol)



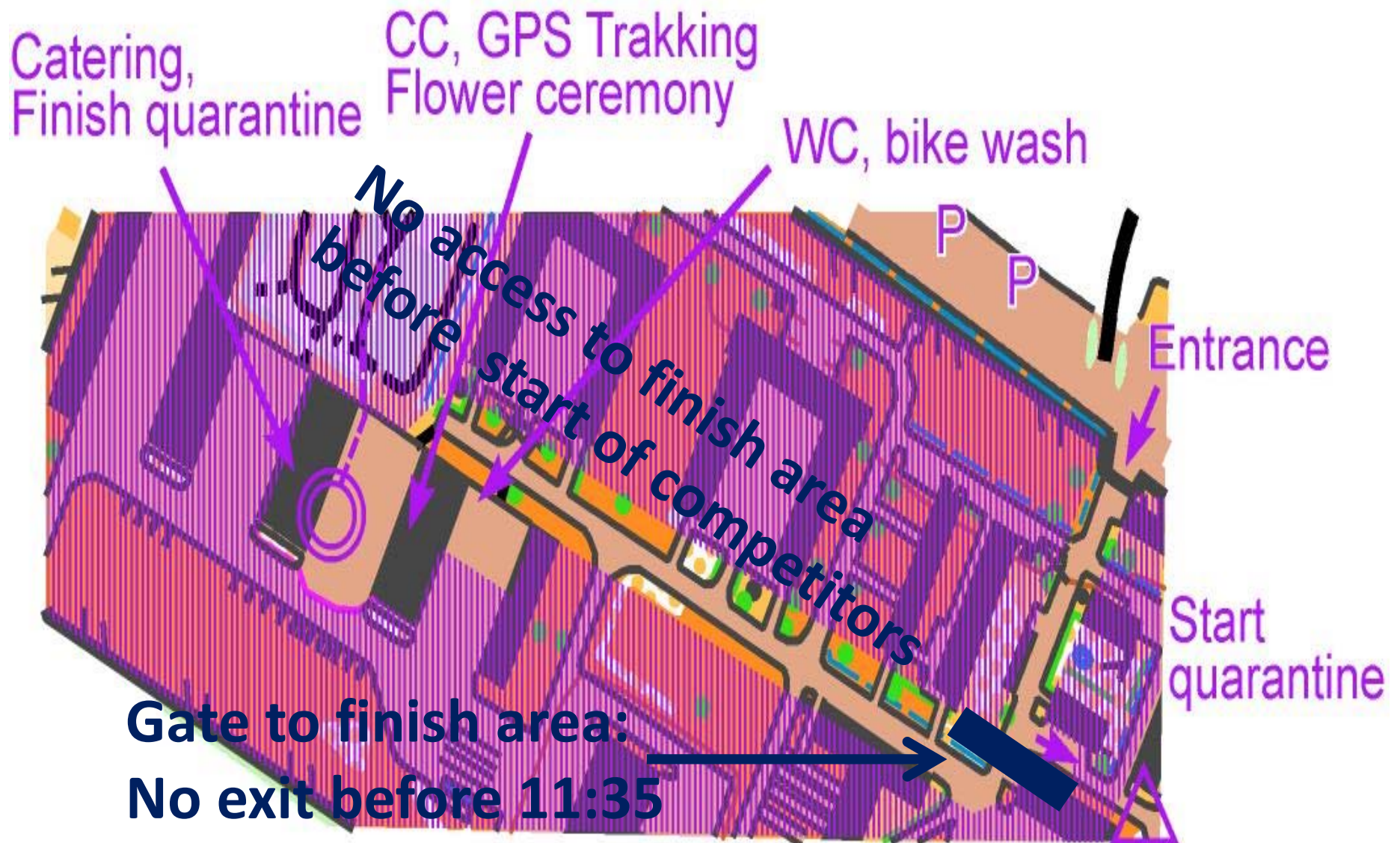
Electric fence is not allowed to pass



307 Water channel can be up to 1 meter deep



Tower is only marked with a black cross





Sprintdistanz - Allentsteig

1: 750



50 m

— Absperrgitter — Absperrband
— Absperrnetz — Zelt



Thank you for coming

