



WMTBOC JWMBTOC EYMTBOC

5th - 12th August 2018

Zwettl





Team Leader Meeting 7th August 2018

Middle

IOF Adviser

Simon Seger

Event Director

Paul Grün

Course Planner

Walter Dravetz

National Adviser

Thomas Wieser



Australia



Bulgaria



Czech Republic



Denmark



Estonia



Finland



France



Germany



Great Britain



Hong Kong



Hungary



Italy



Japan



Kirgistan



Latvia



Lithuania



New Zealand



Norway



Poland



Portugal



Russian Federation



Slovakia



Slovenia



Spain



Sweden



Switzerland



Turkey



Ukraine



United States



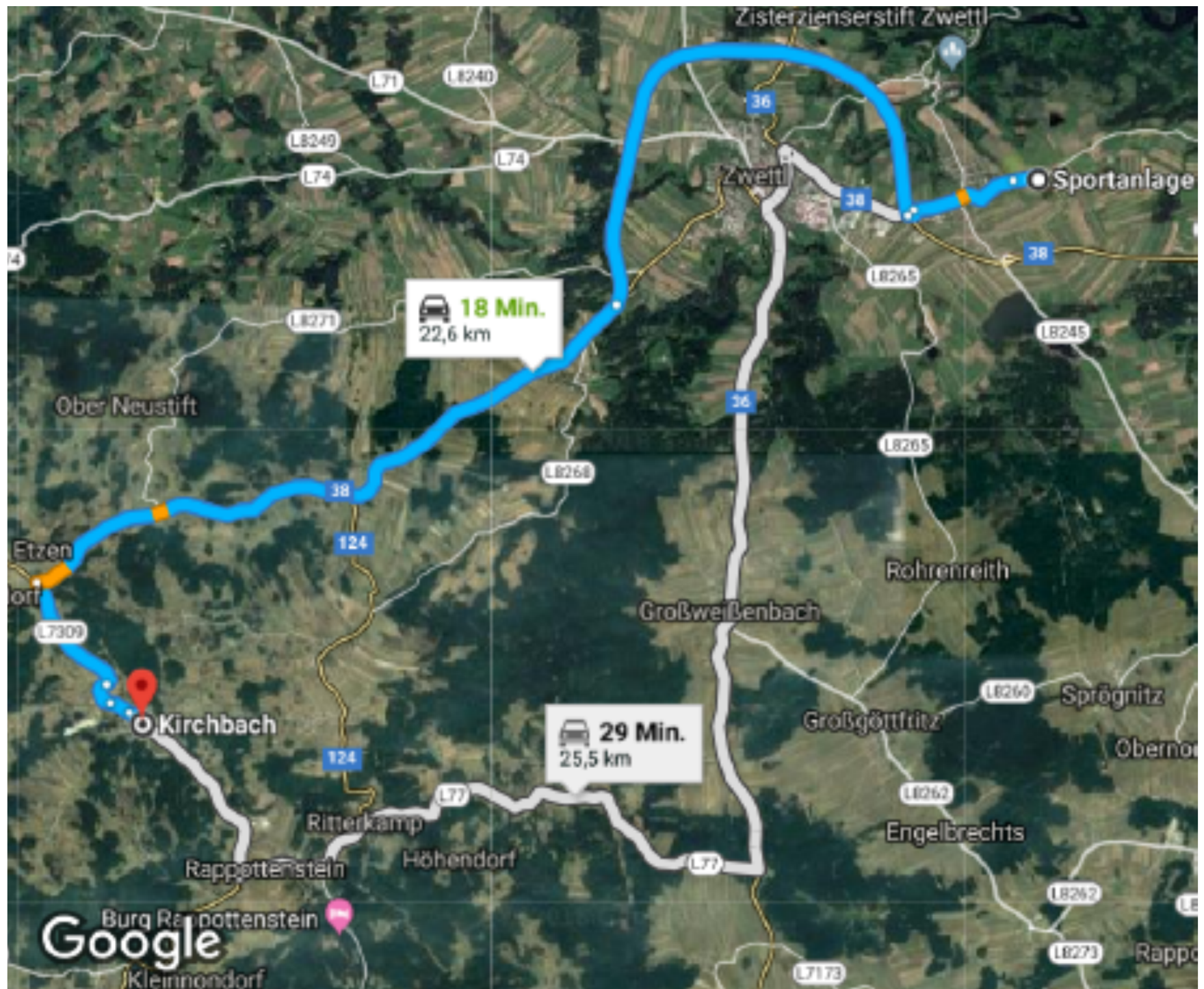
Austria



Middle 8th August

- Kirchbach

- EC – CC ~ 23km
- 15,04310 48,53965
- Map scale: 1: 10.000, Contours 5m
- Map size: 30,5 x 21,8 cm, Pretex
- 2 maps (except W17), all maps have to be brought to finish
- Map will not be collected after race
- Schedule and Course data: no change to bulletin 4





Schedule Middle, Wednesday, 8th August

9:22	Pre-start from the start quarantine open
9:30	First start of M17, M20
9:41	First start of W17, W20
11:00	First start of M21
11:11	First start of W21
11:45	Start quarantine activated, GPS maps on
11:50	Finish Quarantine ends
15:20	– Start Public race
15:50	
15:05	Deadline for complaints (or 15 min. after finish of the athlete)
15:20	Flower ceremony



Middle, Wednesday, 8 th August				
Start interval	2 min			
Courses	Length (ideal)	Climb	No. of controls	Winning times
W21	15,4 km	520 m	18	50 - 55
M21	18.4 km	630 m	20	50 - 55
W20	11.4 km	360 m	15	40 - 44
M20	13.4 km	460 m	17	40 - 44
W17	8.8 km	220 m	11	32 - 37
M17	10.3 km	310 m	14	32 - 37

Middle terrain





free rideable areas
mapped in orange
used in open areas and to
connect two paths also in
forest



International specification for MTBO maps are used...



0.6

509.1 Narrow ride

Non-ridable narrow forest rides should be represented.
Colour: yellow (100%).



510 Visible path junction

When a junction or intersection of paths or tracks is visible, the dashes of the symbols are joined at the junction.
Colour: black.



511 Indistinct junction

When a junction or intersection of paths or tracks is not clear, the dashes of the symbols are not joined.
Colour: black.



Start-
quarantine
and
Pre-start
-8

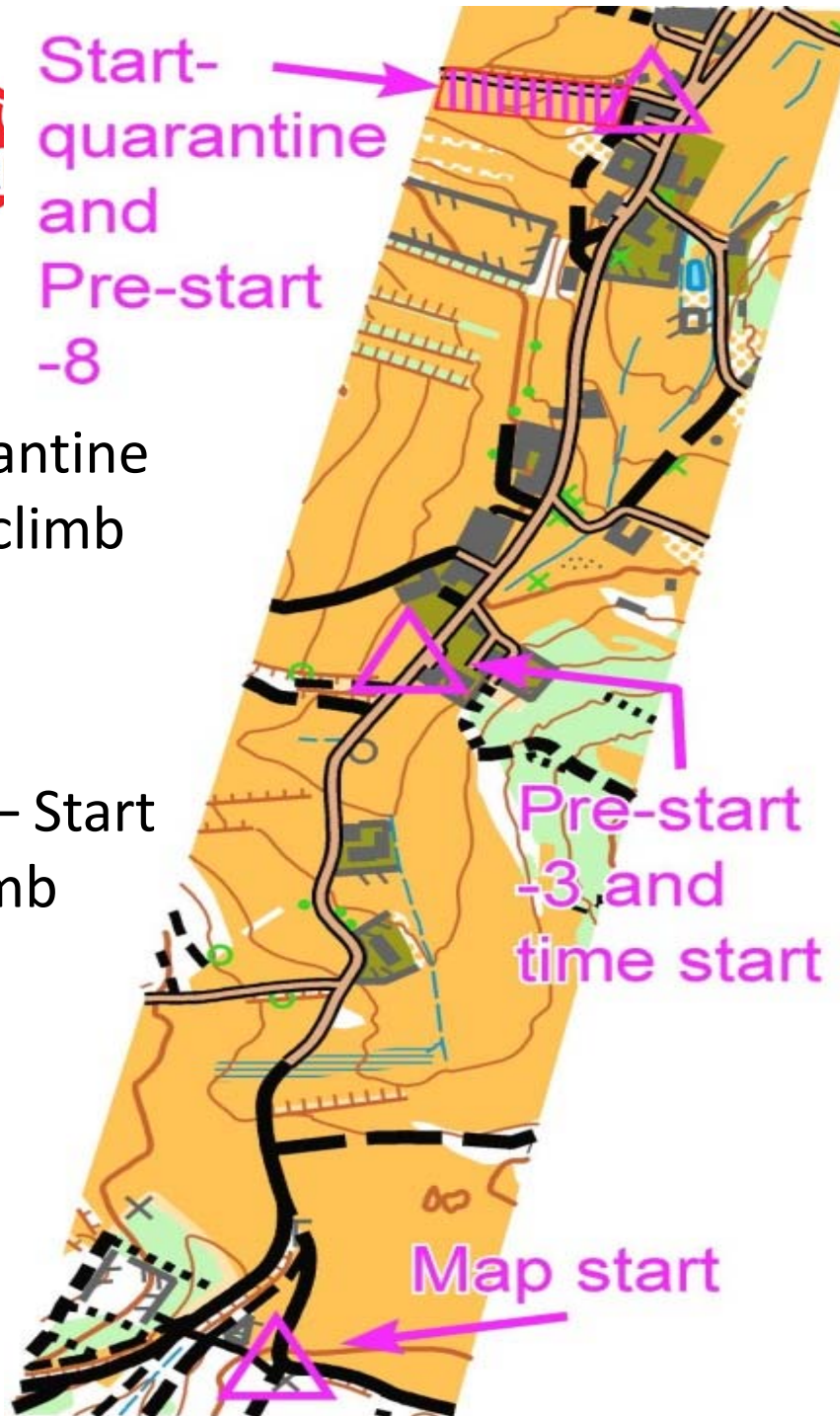


CC – Start quarantine
2500m + 90 m climb

Start quarantine – Start
400 m + 15 m climb

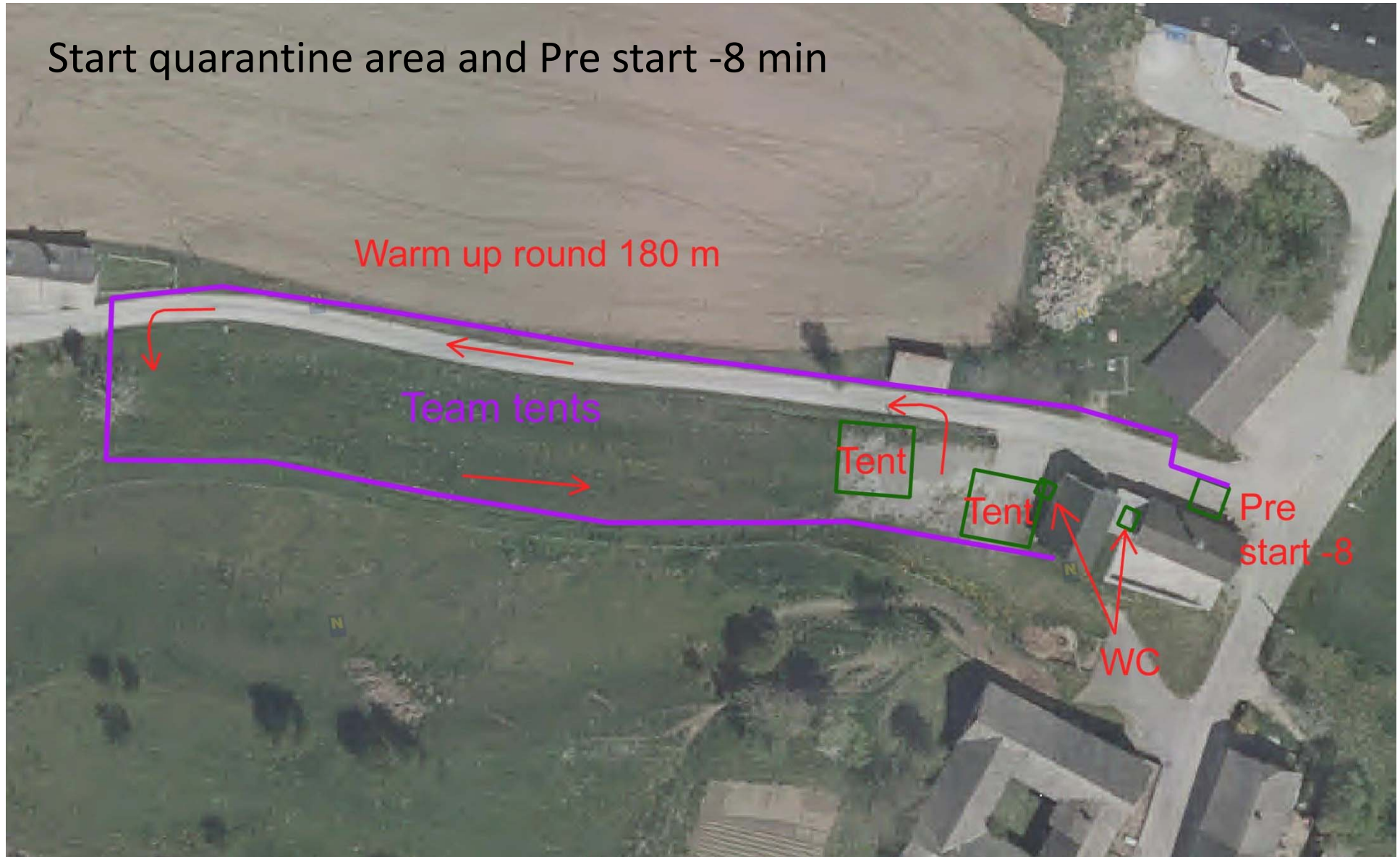
Pre-start
-3 and
time start

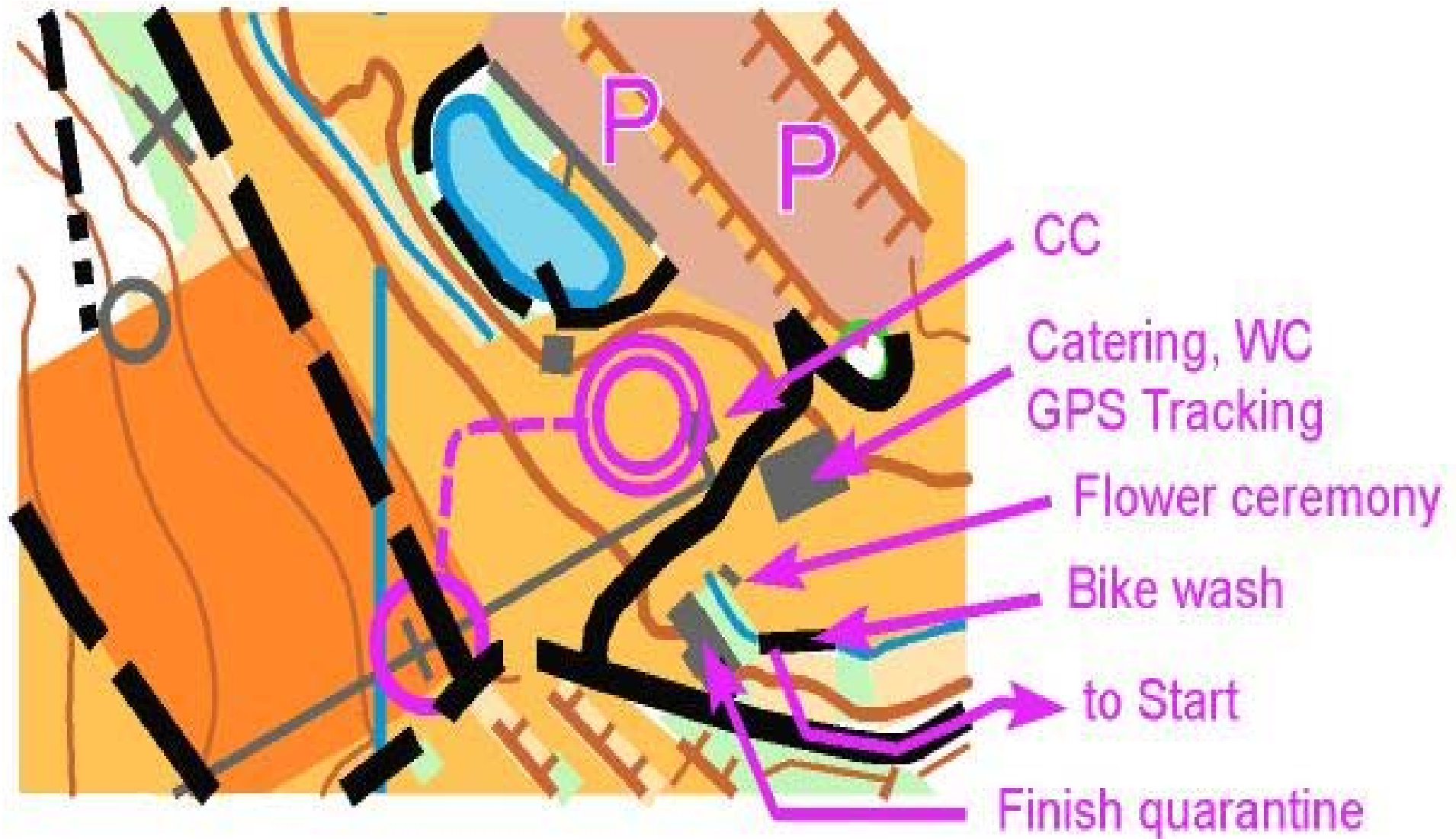
Map start





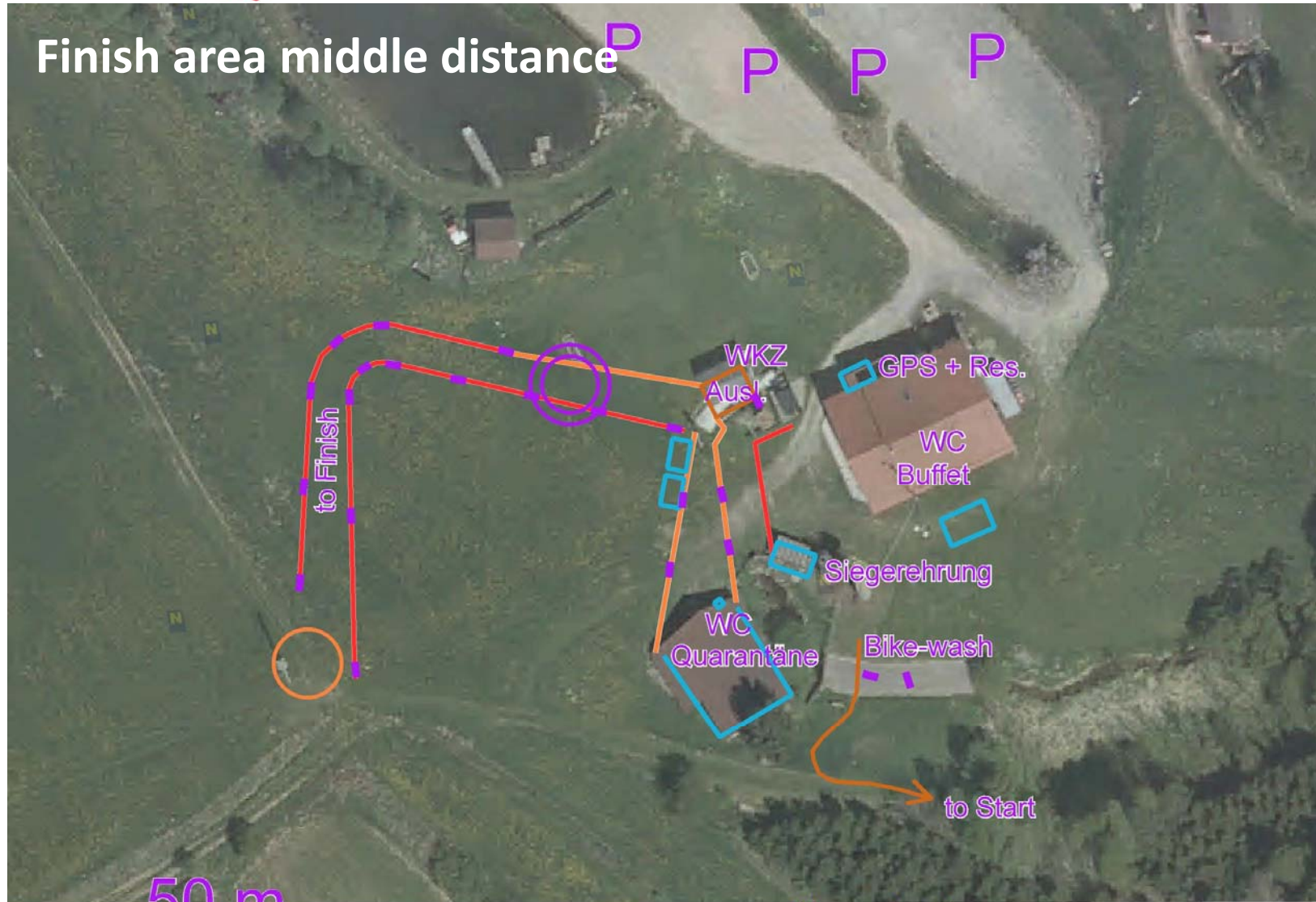
Start quarantine area and Pre start -8 min







Finish area middle distance^D P P P



50 m

- Absperrgitter
- Absperrnetz
- Absperrband
- Zelt



Next Team Leader Meeting

8th August 2018

1800 / 6 pm



Thank you for coming

